


Original article

Quantitative immunohistochemical expression of GP88 in invasive ductal carcinoma (IDC) of human breast cancer

Mona Abdel-Hamed Yehia^{a,*}, Sabah Ali AL-Qadasi^b, Amel Sobhey AL-Sedfy^c

^a Department of Histochemistry and Cell Biology, Medical Research Institute, Alexandria University, Egypt

^b Department of Histology and Anatomy, Faculty of Medicine & Health Science, Sana'a University, Republic of Yemen

^c Department of Pathology, Medical Research Institute, Alexandria University, Egypt

ARTICLE INFO
Article history:

Received 18 December 2020

Received in revised form 30
December 2020

Accepted 04 January 2021

Keywords:

HER2/neu

GP88

Clinical pathological
parameter

Invasive ductal carcinoma

Immunohistochemical
staining

Integrated optical density

ABSTRACT

Introduction: Progranulin or acrogranin is an 88-kDa glycoprotein identified by a biological screen for protein targets associated with high tumorigenicity. This work was aimed to investigate the digital expression of GP88, and HER2/neu as a predictive biomarker in human invasive ductal carcinoma (IDC) versus benign tumors and normal breast tissues, as well as its correlation with different pathological parameters.

Methods: The immunohistochemical avidin-biotin complex protocol of the paraffin section was used to detect the expression of GP88 and HER2/neu in IDC of 60 patients, 30 benign, and ten normal breast tissues.

Results: The study showed a high expression of GP88 in IDC comparing to normal and benign breast tissues. A higher significant statistical correlation between the expression of GP88 and large tumor size, tumor grade, and lymph node metastasis (LNM). While a negative statistical correlation was noticed between the expression of GP88 and ER, PR, and HER2/neu status.

Discussion: The results of the quantitative immunostaining density of GP88 glycoprotein antibody revealed it to be a valuable predictive and therapeutic marker of GP88 in human IDC patients.

© 2021 The Authors. Published by Iberoamerican Journal of Medicine. This is an open access article under the CC BY license (<http://creativecommons.org/licenses/by/4.0/>).

HOW TO CITE THIS ARTICLE: Yehia MAH, AL-Qadasi SA, AL-Sedfy AS. Quantitative immunohistochemical expression of GP88 in invasive ductal carcinoma (IDC) of human breast cancer. *Iberoam J Med.* 2021;3(1):33-43. doi: 10.5281/zenodo.4422074.

1. INTRODUCTION

Breast cancer represents a major scientific, clinical, and societal problem. It is the most common malignancy and the second leading cause of cancer death in females following lung cancer [1, 2] with more than a million new

cases and 370,000 deaths yearly worldwide [3]. In many developing countries, the incidence of breast cancer is now rising sharply due to changes in reproductive factors, lifestyle, and increased life expectancy [4]. The invasive ductal carcinoma is the most common type of breast cancer and comprises 70% to 80% of all cases. It starts in a milk duct of the breast, breaks through the wall of the duct, and

* Corresponding author.

E-mail address: mona.a.yehia@gmail.com

ISSN: 2695-5075 / © 2021 The Authors. Published by Iberoamerican Journal of Medicine. This is an open access article under the CC BY license (<http://creativecommons.org/licenses/by/4.0/>).

<http://doi.org/10.5281/zenodo.4422074>

grows into the fatty tissue of the breast, that it may be able to spread (metastasize) to other parts of the body through the lymphatic system and bloodstream [5]. The cells invasion must occur from detached and penetrate the basement membrane; adherent cells lose their normal attachment to the substrate [6]. Proliferation has higher sensitivity to the extracellular matrix, which maintains an actively proliferating phenotype in the newly encountered matrix [7]. The ductal carcinoma is an ill-defined mass, sometimes adherent to the skin or underlying muscle. The tumor is of varying size and may be associated with calcification. The histomorphology of the tumor is highly variable, ranging from a low-grade tumor showing mildly pleomorphic tumor cells arranged in tubules with little mitotic activity to a high-grade tumor showing highly pleomorphic tumor morphology, with the tumor cells arranged in solid sheets and groups, brisk mitotic activity and abundant tumor necrosis [8]. The Nuclear morphology is evaluated in the variation of nuclear size, the regularity of the nuclear border, hyperchromasia, and prominence of the nucleolus. Also, it has been reported that histologic grade for breast cancer remains a prognostic factor despite changes in the tumor size and the number of positive lymph nodes [9]. The histological grade is commonly employed and has been shown to be of independent prognostic significance. The studies showed a very strong correlation with prognosis; patients with grade I tumors have significantly better survival than those with grade II and III tumors ($p < 0.0001$) [10].

Progranulin is 88-kDa glycoprotein and known as GP88, PC-cell derived growth factor or acrogranin, GP88 gene is located on the 21q portion of chromosome 17, while the mouse gene was found on chromosome 11 [11]. The autocrine growth factor GP88 is abundantly expressed in epithelial cells, immune cells, neurons, and chondrocytes [11]. Also, involved in a variety of biological processes, including embryogenesis, inflammation [12], wound healing [13], host defense [14], and cartilage development and degradation [15]. The importance of the Progranulin (GP88) is no unique receptor for GP88 has been identified [16], it has significant biological effects in different types of cancer for stimulating cell proliferation, migration, invasion, angiogenesis, malignant transformation, resistance to anticancer drugs, and immune evasion [17]. GP88 has been shown to bind the membrane proteins sortilin and tumor necrosis factor receptors (TNFR) 1 & 2 [18]. It is thought to exert its mitogenic effect through the stimulation of both the mitogen-activated protein kinase (MAPK) and the phosphatidylinositol 3-kinase (PI3K) pathways [19]. GP88 stimulates the expression of the

angiogenic growth factor (VEGF) in breast cancer cell lines; breast cancers with elevated GP88 levels have higher VEGF levels and microvascular density [20]. GP88 is an important marker in breast cancer; it can be measured in healthy and breast cancer patients [21]. Increased secretion of GP88 is associated with more aggressive forms of breast, brain, renal, cervical, and other tumors [12].

HER-2/neu (also called c-erbB-2) is a proto-oncogene located on chromosome 17 and encodes a 185-kDa transmembrane glycoprotein receptor (p185 HER2) which has a tyrosine kinase activity and related to the epidermal growth factor receptor (EGFR). It is amplified or overexpressed in about 25% to 30% of human breast cancer, which is associated with tumor aggressiveness [11], and maybe related to variability in the interpretation of protein expression levels [22]. The predictive value of HER-2/neu status with respect to response to therapy as hormonal therapy, resistance to alkylating agent-based chemotherapy, and taxanes [23, 24]. So, the aim of the present work was designed to study the Immunohistochemical expression of the GP88 as a novel prognostic biomarker in human invasive breast carcinoma.

2. METHODS

2.1. SAMPLE PREPARATION

Formalin-fixed and paraffin-embedded of 100 prospective human breast specimens from women's have breast lesion. The samples were diagnosed and differentiated into sixty samples of invasive ductal carcinoma (IDC), thirty samples of benign lesion, and ten samples from normal areas adjacent to the benign tumors were included. Tissue samples were obtained from the Department of Pathology, Medical Research Institute (MRI), Alexandria University, Egypt, All individual cases were asked to freely volunteer for the study and informed written consents were gathered prior to their inclusion in the study according to the guide ethics of institute MRI (IORG#: IORG0008812). Samples from all studied cases were subjected to the following:

- **Clinical parameters:** The patients' age, tumor size, and lymph node metastasis (LNM) status were collected from data sheets from pathology department.
- **Histopathological Examination:** Paraffin-sections were picked up for each sample on glass slides. The slides were stained by hematoxylin and eosin (H&E) stains in the Histochemistry and Cell Biology department and reviewed by two pathologists (Diagnosis of the specimens was made according to the WHO classification of the Tumors) [25]. The

samples were diagnosed and classified the invasive ductal carcinoma into grades (grade I (IDC GI), grade II (IDC GII), and grade III (IDC GIII)).

- **Routine Biological Markers of Estrogen and Progesterone Receptor:** The result of the Immunohistochemical staining of ER and PR. were examined under the light microscopy and semiquantitative positivity of degree was evaluated in pathology department

2.2. IMMUNOHISTOCHEMICAL TECHNIQUE

The detection of both GP88 and HER2/neu protein used avidin-biotin complex protocol (ABC) and DAB stain [26]; In brief; paraffin-embedded specimens were cut into 5µm sections and picked up on the coated slides. The sections were deparaffinized on two changes of xylene and rehydrated in alcohol. The slides were submerged in antigen retrieval (citrate buffer saline pH 6) in an oven at 95°C for 20 minutes, and then left at room temperature for 20 minutes to cool. They were treated with 3% H₂O₂ in PBS to quench the endogenous peroxidase activity, followed by incubation with serum blocking reagent for 30 minutes to block nonspecific binding. The slides were incubated with primary antibody for GP88 (Biorbyt Company®, London, UK) and another one in HER2/neu (Novus Biologicals Company®, USA) at 4°C overnight. The slides were treated with conjugated secondary antibody (ABC-HRP reagent) for 30 minutes, and then they were washed, stained with diaminobenzidine (DAB), and counterstained with hematoxylin. The antibody of negative control slide was replaced with PBS. Each step was followed by PBS washing. Immunohistochemical evaluation of results was arbitrarily graded as negative (0), weak (+1), moderate (+2), and strong (+3).

2.3. IMAGE ANALYSIS

The Integrated Optical Density (IOD) of GP88 and HER2/neu in normal, benign, and IDC groups were

analyzed using a digital image analyzer. Images were photographed and recorded using an Olympus microscope equipped with spot digital camera and image J software. The maximum and minimum pixel recorded the integrity of intensity color based on Gray-level acquisition. The analysis of data was carried out by reading ten images for each case. The mean value of each reaction was based on the mean of the pixel number [27]. IOD based on Gray-level transition probabilities in digitized images were graded from dark to light (0 up to 250). The average score across the whole images should be taken; IOD in digitized images were calibrated from strong to weak (180 down to 70) by pixel. This calculation was proceeding after subtracting the pixel value from 250, the pick of lighter elimination.

All data were normally distributed according to the Kolmogorov-Smirnov (K-S) normality test, and then analyzed using statistical software package SPSS 20. *P* values ≤ 0.05 were considered statistically significant.

3. RESULTS

3.1. HISTOPATHOLOGICAL INVESTIGATION

The histopathology diagnosis of the studying cases found the benign cases revealed as the majority (83%, 25/30) of fibroadenoma, while 17% (5/30) cases were represented with fibrocystic disease. At malignant cases, there was a majority of invasive ductal carcinoma (IDC) (98%, 59/60), while 2% (1/50) of the malignant cases were represented with invasive lobular carcinoma (ILC). In addition, according to Scarf-Bloom-Richardson histological grading system of breast cancer, the majority of the malignant cases diagnosed as grade II (45/60, 75%), grade III cases were represented by 22% (13/60), and the minority cases was grade I (2/60, 3%) of the malignant cases as in the (Table 1).

Table 1. Distribution of pathological diagnoses of the malignant cases

Malignant case	Grade I (n=2, 3%)	Grade II (n=45, 75%)	Grade III (n=13, 22%)	Total (n=60, 100%)
Vascular invasión				
Positive	2 (100%)	44 (98%)	13 (100%)	59 (98%)
Negative	0 (0%)	1 (2%)	0 (0%)	1 (2%)
Lymph node metástasis				
Positive	0 (0%)	35 (78%)	9 (69%)	44 (73%)
Negative	2 (100%)	10 (22%)	4 (31%)	16 (27%)

The paraffin section photomicrograph illustrated the histopathological changes of the study groups. The normal

breast tissue showed acini lined by epithelial cells, an intact myoepithelial cell layer attached to the basement membrane of acini (Figure 1A). A mild adenosis and cyst formation with mild epithelial hyperplasia in the adjacent duct and intact myoepithelial cell layer in fibrocystic disease of the benign breast case (Figure 1B). The tumor cells of invasive ductal carcinoma cases have abundant eosinophilic cytoplasm and large moderately pleomorphic round to ovoid vesicular nuclei arranged in cords and some contain small nucleoli. Infiltrated tumor cells in desmoplastic stroma represented GII (Figure 1C). The neoplastic growth formed of nests and tubules and hyperchromatic nuclei and largely pleomorphic vesicular nuclei were exhibiting mitotic activity in ductal epithelial cells with many pyknotic cells, as well as, many residual nuclei were seen in GIII (Figure 1D).

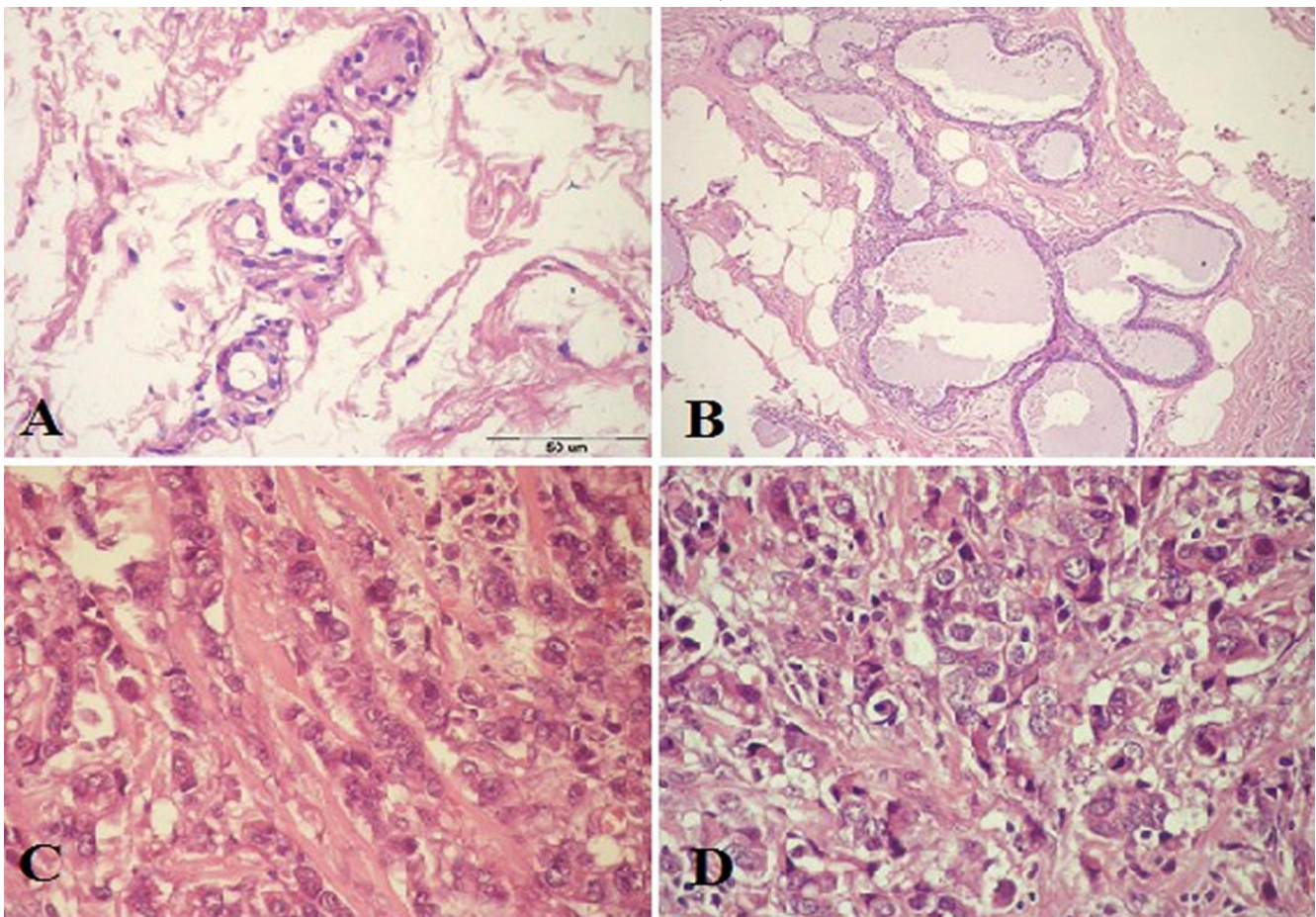


Figure 1: Paraffin section photomicrograph stained by (H&E stains, Bar=50 μ m). **A:**- Note the acini present in a normal lobule with dark-staining epithelium cells nuclei and homogenous pink cytoplasm and the underlying myoepithelial cells with clear cytoplasm, wild and edema connective tissue a) was seen. **B:** A fibrocystic case of benign lesion with apocrine cyst formation and mild epithelial hyperplasia in the adjacent duct and intact myoepithelial cell layer. **C:** IDC grade II case, show tumor cells have abundant eosinophilic cytoplasm and large moderately pleomorphic round to ovoid vesicular nuclei arranged in cords and some contain small nucleoli. There are tumor cells infiltrated by desmoplastic stroma. **D:** IDC case grade III, show solid nests of tumor cells with large pleomorphic nuclei and some prominent nucleoli. There are numerous mitotic figures, large vesiculated nuclei and many residual nuclei and vacuolated cytoplasm.

Table 2. Distribution of some clinical pathological parameters of breast cases study

Categories	Benign group n (%)	Malignant group n (%)		X ²	P
Age					
15-25	8 (27%)	0 (0%)			
> 25-35	3 (10%)	2 (3%)			
> 35-45	17 (57%)	19 (31.5%)			
> 45-55	1 (3%)	19 (31.5%)			
> 55-65	1 (3%)	16 (27%)			
> 65	0 (0%)	4 (7%)			
Mean±SD	35.6±11.23	51.53±9.6		35,7	< 0.001
Tumor Size		Grade II n (%)	Grade III n (%)		
T1 ≤ 2 cm	2 (7%)	5 (11%)	1 (88%)	5.22	0.3
T2 > 2-5 cm	24 (80%)	27 (60%)	11 (84%)		
T3 > 5 cm	4 (13%)	13 (29%)	1 (8%)		
Estrogen Receptor (ER)		Grade II n (%)	Grade III n (%)		
Negative (-ve)		5 (11%)	3 (23%)	5.6	0.14
Weak (ve1 ⁺)		10 (22%)	6 (46%)		
Moderate (ve2 ⁺)		18 (40%)	3 (23%)		
Strong (ve3 ⁺)		17 (27%)	1 (8%)		
Progesterone Receptor (PR)		Grade II n (%)	Grade III n (%)		
Negative (-ve)		7 (16%)	3 (23%)	5.0	0.2
Weak (ve1 ⁺)		8 (18%)	7 (54%)		
Moderate (ve2 ⁺)		21 (46%)	2 (15%)		
Strong (ve3 ⁺)		9 (20%)	1 (8%)		

3.2. CLINICAL PATHOLOGICAL PARAMETERS

The age ranges of benign and malignant groups were 15-64 and 15-74 years with a mean ± SD of 36 ± 11 and 52 ± 10 years respectively. The data reported of the benign group cases 57% (17/30) at age range > 35-45 years versus of the malignant group cases 31.5% (19/60) at age ranges > 35-45 and > 45-55 years respectively. Neither of the benign cases was above 65 years nor of malignant cases under 25 years as shown in (Table 2).

According to the tumor size assessed according to TNM (Tumor, Node, Metastasis) staging system of breast cancer, there was 80% (24/30) of the benign cases was T2 (> 2-5 cm) versus 66% (27/45 grade II and 11/13 grade III) of the malignant cases were T2 (> 2-5 cm) as illustrated in the (Table 2). Whereas the percentage of positive vascular invasion (VI) was 98% (59/60) were distributed in the (Table 1), as well as, Lymph Node Metastasis (LNM) was illustrated in the (Table 1). Also, Noticed the majority of positive cases were represented (44/60.3%) and free of lymph node metastasis cases were 16/60 (27%).

3.3. IMMUNOHISTOCHEMICAL STAINING INVESTIGATION

The immunostaining expression of human epidermal growth factor receptor-2 (HER2/neu) was detected as diffuse brown color detected in the cell membrane of the ductal epithelial cells. There was a weak expression in the normal ductal epithelial cells of the control breast tissue (Figure 2A). HER2/neu was expressed as a moderate expression in the few proliferating ductal epithelial cells of the Benign cases less than ten cells of the field (Figure 2B). Whereas at the malignant cases an increase of the immunostaining of the HER2/neu expression was ranged from moderate to strong. A strong positivity expression (+3) showed mostly in the epithelial cell membrane > 50 of IDC grade III (Figure 2C) and a Moderate positive expression (+2) of HER2/neu in the ductal epithelial cells membrane with dark brown stain showed in IDC grade II (Figure 2D).

The immunostaining expression of GP88 was detected as diffuse, homogenous brown color stained the cytoplasm and membrane of the ductal epithelial cells of the breast lesions studies group. GP88 Immunoeexpression showed a negative expression in normal breast tissue, as well as in the benign case beside a weak expression in stromal tissue (Figure 3 A and B). The high expression of the GP88 was shown in the malignant cases group. There was strong immunostaining of GP88 (+3) in the epithelial cell and marked positive expression (+2) of GP88 in the cytoplasm of the ductal epithelial cells in the IDC grade II (Figure 3 C and D). Also, the IDC grade III showed strong immunoeexpression (+3) of GP88 which appeared as the homogenous expression in the invasive ductal epithelial cell and surrounding stromal tissue, in another cases there was coarse and homogenate immunostaining at the

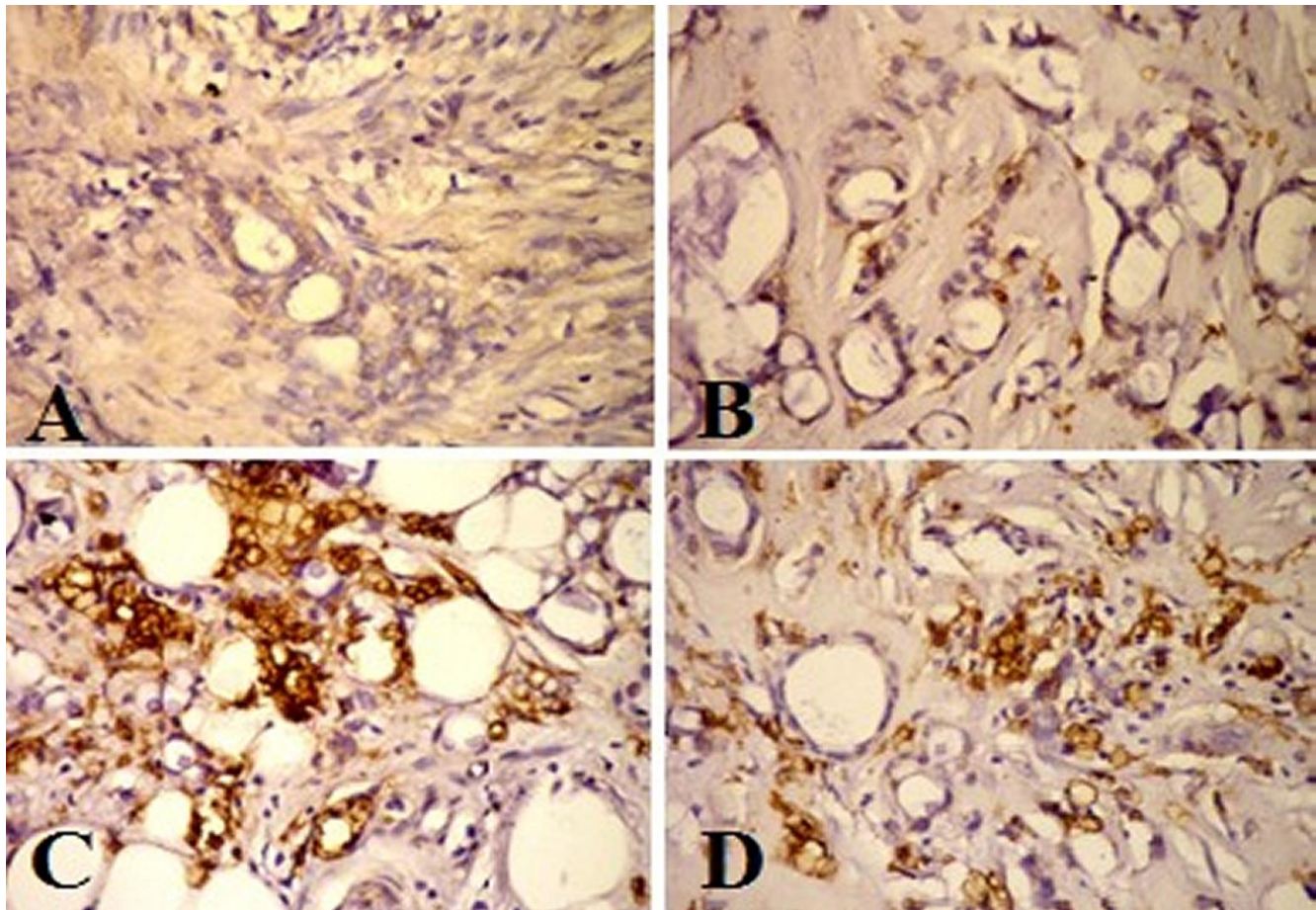


Figure 2: HER2/neu Immunohistochemical staining photomicrograph of breast paraffin section used ABC protocol (DAB stain, Bar = 50 μ m) show: **A:** Control breast tissue very weak immunoactive at epithelial ductal cells. **B:** Benign case with mild expression of HER2/neu in the cell membrane of the ductal epithelial cell <10 cells. **C:** IDC grade II, strong positive immunostaining of HER2/neu (+3) in the epithelial cell membrane > 50. **D:** Moderate positive expression (+2) of HER2/neu in the ductal epithelia cells membrane >30.

Table 3. Distribution of HER2/neu positivity among breast cancer case

HER/neu	Control group n (%)	Benign group n (%)	Malignant group n (%)		Total n (%)
			G-II	G-III	
Negative (-ve)	8 (80%)	12 (40%)	8 (18%)	2 (16%)	30 (31%)
Weak (ve1⁺)	2 (20%)	16 (54%)	24 (53%)	2 (16%)	30 (31%)
Moderate (ve2⁺)	0 (0%)	2 (6%)	9 (20%)	4 (30%)	15 (15%)
Strong (ve3⁺)	0 (0%)	0 (0%)	4 (9%)	5 (38%)	9 (9%)
Total	10 (100%)	30 (100%)	45 (100%)	13 (100%)	98 (100%)

epithelial ductal cell and stroma (Figure 3 E and F).

3.3.1. Semiquantitative Immunohistochemical Evaluation

Hormonal status of both estrogen and progesterone receptor (ER&PR) used as a biological marker in the malignant cases were differentiated to malignant grade II & III and

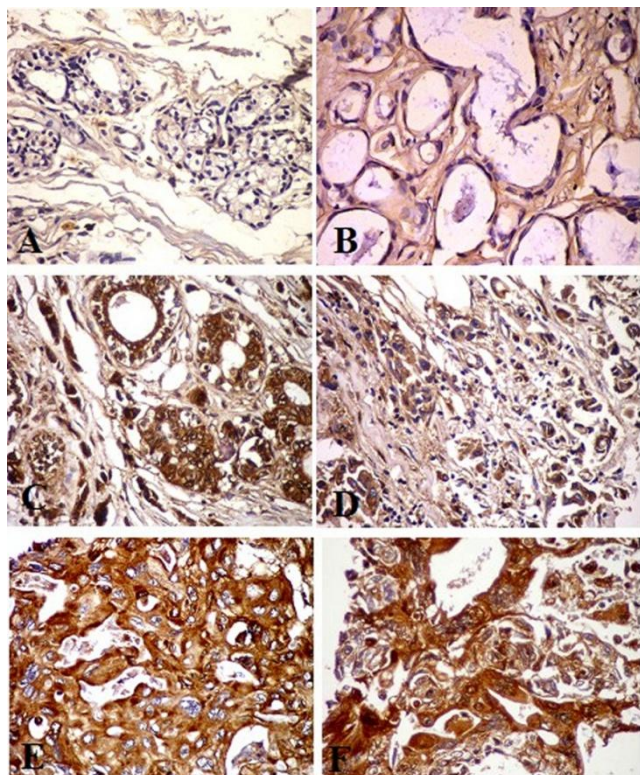


Figure 3: GP88 Immunohistochemical staining photomicrograph of breast paraffin section used ABC protocol (DAB stain, Bar = 50 μ m) show: **A:** Control breast tissue. **B:** Benign case with negative expression of GP88 in the cytoplasm of the ductal epithelial cell and weak expression in stromal tissue. **C and D:** Invasive ductal carcinoma (IDC) grade II, strong immunostaining of GP88 (ve3⁺) in the epithelial cell at the luminal surface. **D:** Marked positive expression (ve2⁺) of GP88 in the cytoplasm of the ductal epithelia cells. **E and F:** IDC grade III, note strong expression (ve3⁺) of GP88 as the homogenous expression of GP88 in the ductal epithelial cell and surrounding stromal tissue. **F:** High expression of the GP88 with coarse and homogenate immunostaining at the upper surface of the epithelial ductal cell.

illustrated in (Table 2) respectively. According to human epidermal growth factor receptor-2 (HER2/neu) expression,

noticed that 53% (24/45) of IDC grade II were weakly positive (-ve), while 38% (5/13) of IDC grade III were strongly positive (ve3⁺), as shown in (Table 3). As regard to

Table 4. Distribution of GP88 immunostaining positivity in the breast cases study

GP88	Control group n (%)	Benign group n (%)	Malignant group n (%)		Total n (%)
			G-II	G-III	
Negative (-ve)	8 (80%)	17 (57%)	3 (7%)	1 (8%)	32 (33%)
Weak (ve1⁺)	2 (20%)	11 (37%)	4 (9%)	0 (0%)	19 (19%)
Moderate (ve2⁺)	0 (0%)	1 (3%)	32 (71%)	2 (15%)	35 (36%)
Strong (ve3⁺)	0 (0%)	1 (3%)	6 (13%)	10 (77%)	12 (12%)
Total	10 (100%)	30 (100%)	45 (100%)	13 (100%)	98 (100%)

GP88 immunostaining expression resulted a moderate positive expression (ve2⁺) in 71% (32/45) of grade II IDC and strong (ve3⁺) in 77% (10/13) of grade III IDC as illustrated in (Table 4).

3.3.2. Immunohistochemical Integrated Optical Density (IOD)

Figure 4 illustrated a gray value detection of the binary evaluation at the 8-bit image of the stain density was quantitative digitally by pixel in the integrated region of optical density (ROD) as following:

The mean and SD values of HER2/neu IOD for breast lesions illustrated the different ranges from 42 ± 3.82 , 63 ± 5.34 , 143 ± 5.49 and 169 ± 4.46 as control, benign and IDC grade II and III were respectively. There was a statistically significant difference between the benign group and malignant one, as well as between the malignant grade II and III of IDC ($P < 0.001$).

The mean and SD values of GP88 IOD for control, benign, and IDC grade II and III were $35 \pm 3.41 \pm 4$, 140 ± 8 , and 162 ± 7 respectively. A significant statistical difference of GP88 IOD was noticed between grade II and grade III of IDC cases ($P < 0.001$), as well of both control and benign group ($P < 0.001$). There was no statistical significant difference between GP88 IOD of control and benign groups ($P = 0.1$).

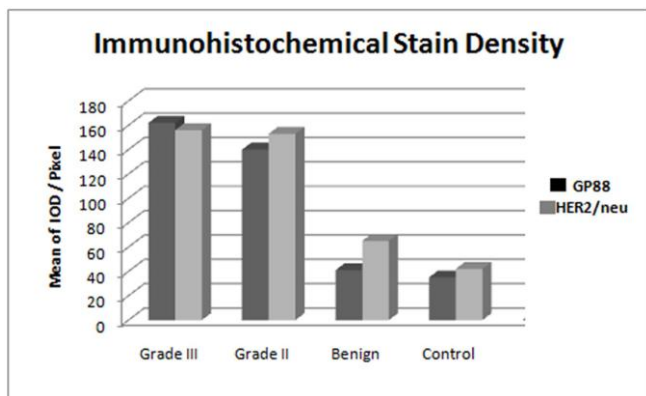


Figure 4: Bar Chart illustrate the mean value of HER2/neu and GP88 IOD of the immunohistochemistry expression in the breast cases study, note a significant increased of both markers in grade II & III of malignant cases compared to the benign and control, while there are insignificant difference between both markers.

IOD: Integrated Optical Density

3.3.3. Correlation between GP88 IOD and Clinicopathological Parameters

Table 5. Correlation between GP88 IOD and histopathological parameters of breast cases study		
Pathological parameters	GP88 IOD	
Age	r	-0.14
	P	0.28
Tumor size	r _s	0.354**
	P	0.006
Grades	r _s	0.353**
	p	0.006
LNM	r _s	0.493**
	P	0.000
Estrogen receptor status	r _s	-0.09
	p	0.5
Progesterone receptor status	r _s	0.06
	P	0.65
HER/neu status	r _s	0.22
	P	0.08

IOD: Integrated Optical Density; LNM: lymph node metastasis. r: Pearson coefficient; r_s: Spearman coefficient. *Correlation is significant at the 0.05 level. **Correlation is significant at the 0.01 level.

There was no statistical significant correlation between the GP88 IOD and patients' age (r = -0.14, P = 0.28), ER status (r = -0.09, P = 0.50), PR status (r = 0.06, P = 0.65) and

HER2/neu status (r = 0.22, P = 0.08) of the studied breast cancer cases, while highly statistical significant correlation was noticed between the GP88 IOD and tumor size (r = 0.354**, P = 0.006), tumor grade (r = 0.353**, P = 0.006) and LNM status (r = 0.493**, P = 0.000) as in Table 5.

4. DISCUSSION

Progranulin or GP88 is an autocrine growth factor and pleiotropic regulatory protein that has been shown to play role in tumorigenesis, including proliferation, survival, migration, angiogenesis invasion and matrix metallo-protease activity [28, 29], as well as, in wound healing and in inflammation in normal tissues [29]. The study was evaluated the role of GP88 through the digital immunostaining density under the correlation with the clinical pathological parameter in the breast cancer lesions. The study evaluated a statistical significant increase in the immunohistochemical expression of GP88 in IDC, versus, normal tissues and benign tumors (P < 0.001). This result is in alignment with previous finding reported a high level of GP88 expression in breast cancer biopsies versus benign lesions and normal mammary epithelial tissues [30, 31]. The pathological studies with 203 formalin-fixed paraffin-embedded human breast cancer tissue biopsies indicated that GP88 was preferentially expressed in ductal carcinoma with little expression in lobular carcinoma while benign lesions and normal mammary epithelial tissues were negative [32]. In addition, circulating GP88 level in the serum of breast cancer patients was increased in compared to healthy volunteers [28]. Moreover, the parental SW13 cells (cell derive from an adrenal carcinoma) poorly tumorigenic *in vivo*; however, by over-producing GP88, they become highly tumorigenic in mice [33, 34]. This finding revealed that the SW13 cells are highly sensitive to the proliferative effects of GP88. So, the digital analysis (IOD) of the GP88 in the present work revealed the role of the GP88 expression associated with the increased tumor grade in the breast cancer and detected its role in the proliferation and invasive of the tumor cell in breast tissue. The immunostaining positivity of GP88 was expressed from marked to intensity in the breast malignant lesion and differentiated in both grade II and grade III, this results were indeed the role of the GP88 expression induced and associated with division and invasive tumor cells. This finding was confirmed that the pgrn (GP88) stimulate cell division, invasion, and survival demonstrates [33]. Also, it has been revealed the role of GP88 expression for regulates multiple processes or stages in carcinoma progression [35]. However, there was no statistically significant correlation

between immunohistochemical expression of GP88 and patients' age ($r = -0.1$, $P = 0.3$). This result is consistent with the results of other previous studies [29, 36], who reported the clinical and tumor characteristics (p-value risk ratio 95%) confidence interval lower upper age in years Age ≤ 50 compared to > 50 . Therefore, it could be agreed that the tissue GP88 level is predictive of recurrence in patients with hormone-responsive BC [37], while the patients with early-stage BC would be suggested that serum GP88 determination has the potential to have additional clinical utility. Arechavaleta-Velasco et al, revealed that the PGRN is a unique secretory glycoprotein and the focus of its prospective use as a biomarker or as a therapeutic target in cancer [17].

The large tumor size, high tumor grade, and positive lymph nodes are all signs of poor prognosis and elevated GP88 expression have shown to be associated with tumorigenesis and poor prognosis in several cancer types including ovarian [31], renal [38], prostate [39], liver [40], esophageal [41, 42] and breast cancers [42]. The current study showed a highly statistically significant correlation between the immunohistochemical expression of GP88 and tumor size ($r = 0.354$, $P = 0.006$) of malignant breast cases. This result is going in accordance with some authors [36], but was contrasted with other [30, 43]. Moreover, a highly statistically significant correlation was observed in the current study between GP88's immunohistochemical expression and tumor histological grade ($r = 0.353$, $P = 0.006$). This result is agreement to the overexpression of GP88 in 80% invasive ductal carcinoma, where it correlated with the clinical variables of poor prognosis such as tumor grade, p53 expression and Ki67 index [32, 36]. Immunohistochemical expression of GP88 in the present study exhibited a highly statistically significant correlation with LNM of the studied breast cancer cases ($r = 0.493$, $P = 0.000$). A previous study found that high levels of GP88 expression were closely correlated with clinicopathological parameters such as lymph node metastasis [36]. The histopathological features are independent predictors of clinical outcomes such as lymph node status, tumor size and tumor grade for invasive ductal carcinoma patients were based evidence that IHC analysis of GP88 expression maybe help a predict treatment outcomes in a prognostic role. At the correlation between the GP88 and hormonal status as a routine marker and necessary for the treatment and therapy of BC, our results in IDC patients found no statistical significant correlation between the digital quantitative immunohistochemical expression of GP88 and ER ($r = 0.09$, $P = 0.50$) and PR ($r = 0.06$, $P = 0.65$) status. These results are conflicted to the result of the GP88

positive staining was common in ER/PR negative samples than that in ER/PR positive tumors [43], also, the agreement to present result, that there was no statistical correlation between GP88 expression and ER and PR levels [29]. However, screening of GP88 expression in human breast cancer cell lines indicated that GP88 was highly expressed in both ER positive and ER negative in human breast carcinomas [44, 45]. This lack of correlation between GP88's immunohistochemical expression and ER status indicated that the growth factor receptors promote proliferation without requiring ER-mediated growth signalling [46].

It has been reported that level of GP88 expression was a major determinant of the intrinsic activity of the mitogen-activated protein kinase (MAPK) and phosphatidylinositol 3'-kinase (PI3K) in cell line studies suggesting that the mitogen-activated protein kinase and phosphatidylinositol 3'-kinase signaling pathways may be involved in the promotion of tumor invasion and migration by GP88 [16, 34]. However, the current study revealed no statistical significant correlation between the immunohistochemical expression of GP88 and HER2/neu status ($r = 0.2$, $P = .08$) of the studied breast cancer cases. This result is going in accordance with many studies reported that there was no correlation between expression of GP88 and HER2/neu, and indicated that GP88 and HER2/neu were independent biomarkers [29, 32]. Other investigator found that 25% of HER2-overexpressing biopsies (3+ by IHC) were strongly positive for GP88 [47] and the treatment of HER2-overexpressing cells with Trastuzumab decreased the levels of MAPK phosphorylation [48]. The results are going to that the activation of mitogen-activated protein kinase (MAPK) signaling pathways in breast cancer cells by the over-production of growth factors [43]. So, GP88 can activate MAPK signaling pathway and phosphorylated MAPK regardless of the HER2 expression levels, thereby GP88 is not necessarily dependent on HER2 overexpression, because it has its own ability to activate MAPK pathway [49]. This may be indicated that HER2/neu and GP88 are independent biomarkers.

Finally, the study found that high progranulin expression was associated with higher breast histopathological features, which are strong independent predictors of clinical outcomes such as lymph node status, tumor size and tumor grade for patients with invasive ductal carcinoma, as well as, the digital quantitative immunostaining of GP88 (IOD) in IDC cases was evident a high statistically significant correlation compared to the benign and malignant cases as well as between the IDC grade II and grade III ($P = 0.0001$). Beside of no correlation between GP88 with ER,

PR, and HER2/neu expression.

5. CONCLUSIONS

It may be suggested that the GP88 is involved in processes of cells invasiveness, regulate tumor cell progression and can act as a biomarker along with a therapeutic target. Therefore, the further clinical study on more of breast lesions will be guaranteed to improve the thinkable of GP88 use as diagnosis and treatment.

6. ACKNOWLEDGEMENTS

The authors wish to thank the Cooperative of the Surgery and Pathology Departments of the Medical Research Institute for providing the breast cancer cases doe the study along with clinical information.

7. REFERENCES

1. Khan HM, Saxena A, Vera V, Abdool-Ghany F, Gabbidon K, Perea N, et al. Black Hispanic and Black non-Hispanic breast cancer survival data analysis with half-normal model application. *Asian Pac J Cancer Prev*. 2014;15(21):9453-8. doi: 10.7314/apjcp.2014.15.21.9453.
2. Byers T, Wender RC, Jemal A, Baskies AM, Ward EE, Brawley OW. The American Cancer Society challenge goal to reduce US cancer mortality by 50% between 1990 and 2015: Results and reflections. *CA Cancer J Clin*. 2016;66(5):359-69. doi: 10.3322/caac.21348.
3. Lehner J, Stötzer OJ, Fersching D, Nagel D, Holdenrieder S. Circulating plasma DNA and DNA integrity in breast cancer patients undergoing neoadjuvant chemotherapy. *Clin Chim Acta*. 2013;425:206-11. doi: 10.1016/j.cca.2013.07.027.
4. Forouzanfar MH, Foreman KJ, Delossantos AM, Lozano R, Lopez AD, Murray CJ, et al. Breast and cervical cancer in 187 countries between 1980 and 2010: a systematic analysis. *Lancet*. 2011;378(9801):1461-84. doi: 10.1016/S0140-6736(11)61351-2.
5. Smith RA, Manassaram-Baptiste D, Brooks D, Cokkinides V, Doroshenk M, Saslow D, et al. Cancer screening in the United States, 2014: a review of current American Cancer Society guidelines and current issues in cancer screening. *CA Cancer J Clin*. 2014;64(1):30-51. doi: 10.3322/caac.21212.
6. Pandya S, Moore RG. Breast development and anatomy. *Clin Obstet Gynecol*. 2011;54(1):91-5. doi: 10.1097/GRF.0b013e318207ffe9.
7. Cameron MD, Schmidt EE, Kerkvliet N, Nadkarni KV, Morris VL, Groom AC, et al. Temporal progression of metastasis in lung: cell survival, dormancy, and location dependence of metastatic inefficiency. *Cancer Res*. 2000;60(9):2541-6.
8. Young B, O'Dowd G, Woodford Ph. *Wheater's Functional Histology: A Text and Colour Atlas*. 6th ed. Elsevier, Churchill Living Stone; 2013.
9. Schwartz AM, Henson DE, Chen D, Rajamarthandan S. Histologic grade remains a prognostic factor for breast cancer regardless of the number of positive lymph nodes and tumor size: a study of 161 708 cases of breast cancer from the SEER Program. *Arch Pathol Lab Med*. 2014;138(8):1048-52. doi: 10.5858/arpa.2013-0435-OA.
10. Harris JR, Lippman ME, Morrow M, Osborne CK. *Diseases of the Breast*. 5th ed. Lippincott Williams & Wilkins; 2014.
11. Liu CJ, Bosch X. Progranulin: a growth factor, a novel TNFR ligand and a drug target. *Pharmacol Ther*. 2012;133(1):124-32. doi: 10.1016/j.pharmthera.2011.10.003.
12. Bateman A, Bennett HP. The granulin gene family: from cancer to dementia. *Bioessays*. 2009;31(11):1245-54. doi: 10.1002/bies.200900086.
13. Halper J. Growth factors as active participants in carcinogenesis: a perspective. *Vet Pathol*. 2010;47(1):77-97. doi: 10.1177/0300985809352981.
14. Yin F, Banerjee R, Thomas B, Zhou P, Qian L, Jia T, et al. Exaggerated inflammation, impaired host defense, and neuropathology in progranulin-deficient mice. *J Exp Med*. 2010;207(1):117-28. doi: 10.1084/jem.20091568.
15. Feng JQ, Guo FJ, Jiang BC, Zhang Y, Frenkel S, Wang DW, et al. Granulin epithelin precursor: a bone morphogenic protein 2-inducible growth factor that activates Erk1/2 signaling and JunB transcription factor in chondrogenesis. *FASEB J*. 2010;24(6):1879-92. doi: 10.1096/fj.09-144659.
16. Lu Y, Zheng L, Zhang W, Feng T, Liu J, Wang X, et al. Growth factor progranulin contributes to cervical cancer cell proliferation and transformation in vivo and in vitro. *Gynecol Oncol*. 2014;134(2):364-71. doi: 10.1016/j.ygyno.2014.05.025.
17. Arechavaleta-Velasco F, Perez-Juarez CE, Gerton GL, Diaz-Cueto L. Progranulin and its biological effects in cancer. *Med Oncol*. 2017;34(12):194. doi: 10.1007/s12032-017-1054-7.
18. De Muynck L, Van Damme P. Cellular effects of progranulin in health and disease. *J Mol Neurosci*. 2011;45(3):549-60. doi: 10.1007/s12031-011-9553-z.
19. Cuevas-Antonio R, Cancino C, Arechavaleta-Velasco F, Andrade A, Barron L, Estrada I, et al. Expression of progranulin (Acrogranin/PCDGF/Granulin-Epithelin Precursor) in benign and malignant ovarian tumors and activation of MAPK signaling in ovarian cancer cell line. *Cancer Invest*. 2010;28(5):452-8. doi: 10.3109/07357900903346455.
20. Toh H, Cao M, Daniels E, Bateman A. Expression of the growth factor progranulin in endothelial cells influences growth and development of blood

- vessels: a novel mouse model. *PLoS One*. 2013;8(5):e64989. doi: 10.1371/journal.pone.0064989.
21. Giuliano AE, Hunt KK, Ballman KV, Beitsch PD, Whitworth PW, Blumencranz PW, et al. Axillary dissection vs no axillary dissection in women with invasive breast cancer and sentinel node metastasis: a randomized clinical trial. *JAMA*. 2011;305(6):569-75. doi: 10.1001/jama.2011.90.
22. Orucevic A, Chen J, McLoughlin JM, Heidel RE, Panella T, Bell J. Is the TNM staging system for breast cancer still relevant in the era of biomarkers and emerging personalized medicine for breast cancer - an institution's 10-year experience. *Breast J*. 2015;21(2):147-54. doi: 10.1111/tbj.12367.
23. Romond EH, Perez EA, Bryant J, Suman VJ, Geyer CE Jr, Davidson NE, et al. Trastuzumab plus adjuvant chemotherapy for operable HER2-positive breast cancer. *N Engl J Med*. 2005;353(16):1673-84. doi: 10.1056/NEJMoa052122.
24. Slamon DJ, Romond EH, Perez EA; CME Consultants, Inc. Advances in adjuvant therapy for breast cancer. *Clin Adv Hematol Oncol*. 2006;4(3 Suppl 7):suppl 1, 4-9; discussion suppl 10; quiz 2 p following suppl 10.
25. Bansal C, Singh US, Misra S, Sharma KL, Tiwari V, Srivastava AN. Comparative evaluation of the modified Scarff-Bloom-Richardson grading system on breast carcinoma aspirates and histopathology. *Cytojournal*. 2012;9:4. doi: 10.4103/1742-6413.92550.
26. Buchwalow IB, Bocker W. *Immunohistochemistry: Basics and Methods*. Springer Heidelberg Dordrecht; 2010.
27. Matos LL, Stabenow E, Tavares MR, Ferraz AR, Capelozzi VL, Pinhal MA. Immunohistochemistry quantification by a digital computer-assisted method compared to semiquantitative analysis. *Clinics (Sao Paulo)*. 2006;61(5):417-24. doi: 10.1590/s1807-59322006000500008.
28. Edelman MJ, Feliciano J, Yue B, Bejarano P, Ioffe O, Reisman D, et al. GP88 (progranulin): a novel tissue and circulating biomarker for non-small cell lung carcinoma. *Hum Pathol*. 2014;45(9):1893-9. doi: 10.1016/j.humpath.2014.05.011.
29. Tkaczuk KR, Yue B, Zhan M, Tait N, Yarlagadda L, Dai H, Serrero G. Increased Circulating Level of the Survival Factor GP88 (Progranulin) in the Serum of Breast Cancer Patients When Compared to Healthy Subjects. *Breast Cancer (Auckl)*. 2011;5:155-62. doi: 10.4137/BCBCR.S7224.
30. Serrero G, Hawkins DM, Yue B, Ioffe O, Bejarano P, Phillips JT, et al. Progranulin (GP88) tumor tissue expression is associated with increased risk of recurrence in breast cancer patients diagnosed with estrogen receptor positive invasive ductal carcinoma. *Breast Cancer Res*. 2012;14(1):R26. doi: 10.1186/bcr3111.
31. Han JJ, Yu M, Houston N, Steinberg SM, Kohn EC. Progranulin is a potential prognostic biomarker in advanced epithelial ovarian cancers. *Gynecol Oncol*. 2011;120(1):5-10. doi: 10.1016/j.ygyno.2010.09.006.
32. Serrero G, Ioffe OB. Expression of PC-cell-derived growth factor in benign and malignant human breast epithelium. *Hum Pathol*. 2003;34(11):1148-54. doi: 10.1016/s0046-8177(03)00425-8.
33. Zhang Y, Bateman A. The Glycoprotein Growth Factor Progranulin Promotes Carcinogenesis and has Potential Value in Anti-cancer Therapy. *J Carcinogene Mutagene*. 2011;S2. doi: 10.4172/2157-2518.S2-001.
34. He Z, Ismail A, Kriazhev L, Sadvakassova G, Bateman A. Progranulin (PC-cell-derived growth factor/acrogranin) regulates invasion and cell survival. *Cancer Res*. 2002;62(19):5590-6.
35. Tangkeangsirisin W, Serrero G. PC cell-derived growth factor (PCDGF/GP88, progranulin) stimulates migration, invasiveness and VEGF expression in breast cancer cells. *Carcinogenesis*. 2004;25(9):1587-92. doi: 10.1093/carcin/bgh171.
36. Li LQ, Min LS, Jiang Q, Ping JL, Li J, Dai LC. Progranulin expression in breast cancer with different intrinsic subtypes. *Pathol Res Pract*. 2012;208(4):210-6. doi: 10.1016/j.prp.2012.02.001.
37. Tkaczuk KHR, Hawkins D, Yue B, Hicks D, Tait N, Serrero G. Association of Serum Progranulin Levels With Disease Progression, Therapy Response and Survival in Patients With Metastatic Breast Cancer. *Clin Breast Cancer*. 2020;20(3):220-7. doi: 10.1016/j.clbc.2019.11.010.
38. Donald CD, Laddu A, Chandham P, Lim SD, Cohen C, Amin M, et al. Expression of progranulin and the epithelin/granulin precursor acrogranin correlates with neoplastic state in renal epithelium. *Anticancer Res*. 2001;21(6A):3739-42.
39. Monami G, Emiliozzi V, Bitto A, Lovat F, Xu SQ, Goldoni S, et al. Proepithelin regulates prostate cancer cell biology by promoting cell growth, migration, and anchorage-independent growth. *Am J Pathol*. 2009;174(3):1037-47. doi: 10.2353/ajpath.2009.080735.
40. Ho JC, Ip YC, Cheung ST, Lee YT, Chan KF, Wong SY, Fan ST. Granulin-epithelin precursor as a therapeutic target for hepatocellular carcinoma. *Hepatology*. 2008;47(5):1524-32. doi: 10.1002/hep.22191.
41. Chen XY, Li JS, Liang QP, He DZ, Zhao J. Expression of PC cell-derived growth factor and vascular endothelial growth factor in esophageal squamous cell carcinoma and their clinicopathologic significance. *Chin Med J (Engl)*. 2008;121(10):881-6.
42. Koo DH, Park CY, Lee ES, Ro J, Oh SW. Progranulin as a prognostic biomarker for breast cancer recurrence in patients who had hormone receptor-positive tumors: a cohort study. *PLoS One*. 2012;7(6):e39880. doi: 10.1371/journal.pone.0039880.
43. Demorrow S. Progranulin: a novel regulator of gastrointestinal cancer progression. *Transl Gastrointest Cancer*. 2013;2(3):145-51. doi: 10.3978/j.issn.2224-4778.2013.02.02.
44. Shi L, Song HP, Liu CP, Huang T. [Effect of PC-cell derived growth factor shRNA on estrogen dependent of estrogen receptor negative breast cancer cell lines]. *Zhonghua Wai Ke Za Zhi*. 2007;45(7):483-6.
45. Lu R, Serrero G. Inhibition of PC cell-derived growth factor (PCDGF, epithelin/granulin precursor) expression by antisense PCDGF cDNA transfection inhibits tumorigenicity of the human breast carcinoma cell line MDA-MB-468. *Proc Natl Acad Sci U S A*. 2000;97(8):3993-8. doi: 10.1073/pnas.97.8.3993.
46. Lilling G, Hacohen H, Nordenberg J, Livnat T, Rotter V, Sidi Y. Differential sensitivity of MCF-7 and LCC2 cells, to multiple growth inhibitory agents: possible relation to high bcl-2/bax ratio? *Cancer Lett*. 2000;161(1):27-34. doi: 10.1016/s0304-3835(00)00579-6.
47. Kim WE, Serrero G. PC cell-derived growth factor stimulates proliferation and confers Trastuzumab resistance to Her-2-overexpressing breast cancer cells. *Clin Cancer Res*. 2006;12(14 Pt 1):4192-9. doi: 10.1158/1078-0432.CCR-05-2663.
48. Donnelly SM, Paplomata E, Peake BM, Sanabria E, Chen Z, Nahta R. P38 MAPK contributes to resistance and invasiveness of HER2- overexpressing breast cancer. *Curr Med Chem*. 2014;21(4):501-10. doi: 10.2174/0929867320666131119155023.
49. Kim JH, Do IG, Kim K, Sohn JH, Kim HJ, Jeon WK, et al. Progranulin as a predictive factor of response to chemotherapy in advanced biliary tract carcinoma. *Cancer Chemother Pharmacol*. 2016;78(5):1085-1092. doi: 10.1007/s00280-016-3170-z.