



## Nota Clínica

### Catheter traction and gastric outlet obstruction: a repeated complication of using a Foley catheter for gastrostomy tube replacement

#### *Migración del catéter y obstrucción de la salida gástrica: una complicación repetida del uso de catéteres de tipo Foley para substitución de la sonda de gastrostomía*

Jorge Fonseca<sup>1,2</sup>, Gonçalo Nunes<sup>1</sup>, Marta Patita<sup>1</sup>, Rita Barosa<sup>1</sup> and Carla Adriana Santos<sup>1</sup>

<sup>1</sup>Gastroenterology Department. Hospital Garcia de Orta. GENE - Artificial Feeding Team. Almada, Portugal. <sup>2</sup>CiiEM, Centro de Investigação Interdisciplinar Egas Moniz. Monte da Caparica, Portugal

### Abstract

**Background:** Percutaneous endoscopic gastrostomy (PEG) is a safe procedure and major morbidity is unusual. However, the number of PEG fed patients is increasing all over the world and complications may become more and more frequent.

**Case report:** We describe a 73 years old woman with persistent vomit after replacement of the standard PEG tube with a Foley catheter. An upper GI endoscopy showed the catheter pulled into the duodenum causing gastric outlet obstruction. It was removed and replaced by a suitable standard PEG tube, allowing PEG feeding to be resumed.

**Discussion:** Previous reports pointed the risk of this complication, almost always associated with insertion of a Foley-type catheter. Replacement of PEG tubes should be performed by experienced teams using standard PEG tubes and the use of Foley-type catheters for this purpose should be banned from routine practice.

#### Key words:

Gastrostomy.  
Foley catheter.  
Enteral nutrition.  
Complications.

### Resumen

**Introducción:** la gastrostomía endoscópica percutánea (PEG) es un procedimiento seguro con una morbilidad poco común. Sin embargo, el número de pacientes alimentados por PEG está aumentando en todo el mundo y las complicaciones pueden llegar a ser cada vez más frecuentes.

**Caso clínico:** se describe el caso de una mujer de 73 años que se presentó con vómitos persistentes después de la sustitución de la sonda PEG estándar por una sonda de tipo Foley. La endoscopia digestiva mostró el catéter situado en el duodeno causando obstrucción de la salida gástrica. La sonda Foley fue retirada y sustituida por una sonda PEG estándar adecuada, lo que permitió el reinicio de la alimentación por PEG.

**Discusión:** descripciones anteriores en la literatura señalaron el riesgo de esta complicación, casi siempre asociada a la inserción de un catéter de tipo Foley. La sustitución de sondas PEG debe ser realizada por equipos experimentados; el uso de catéteres de tipo Foley para este fin debe ser evitado en la práctica clínica habitual.

#### Palabras clave:

Gastrostomía. Foley.  
Nutrición enteral.  
Complicaciones.

Received: 26/10/2016  
Accepted: 23/12/2016

Fonseca J, Nunes G, Patita M, Barosa R, Santos CA. Catheter traction and gastric outlet obstruction: a repeated complication of using a Foley catheter for gastrostomy tube replacement. Nutr Hosp 2017;34:499-501

DOI: <http://dx.doi.org/10.20960/nh.693>

#### Correspondence:

Gonçalo Nunes. Gastroenterology Department. Hospital Garcia de Orta. Av. Torrado da Silva, 2805-267 Almada, Portugal  
e-mail: [goncalo.n@hotmail.com](mailto:goncalo.n@hotmail.com)

## BACKGROUND

All over the world and most strikingly in developed countries, population is aging. In 2010, world elderly population (above 65 years old) should represent about 8% of total world population, which corresponds to more than 500 million people (1). In 2050, it is expected that this elderly population reach about 1.500 million, 16% of total world population. The increase number of older citizens is creating new social and clinical problems. Neurologic disorders increase with age. Also, most cancers, including head and neck cancer, are more frequent in elderly patients. Neurologic disorders and head and neck cancer share an important clinical feature: they both cause dysphagia and long standing dysphagia is the major clinical indication for percutaneous endoscopic gastrostomy (PEG) (2). This aging population in developed countries is creating an increasing number of PEG fed patients.

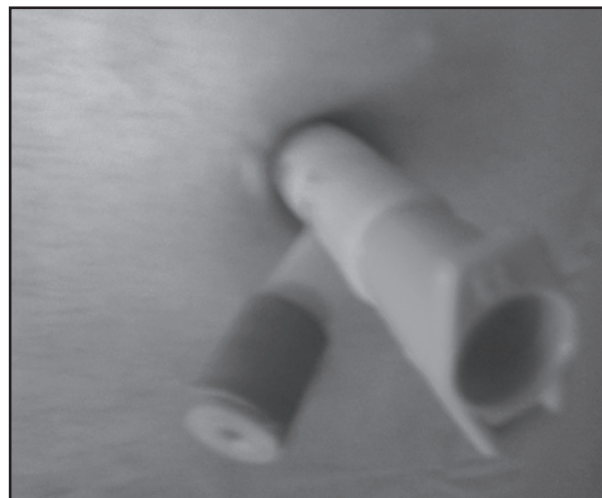
Endoscopic gastrostomy is generally considered a safe procedure with very low mortality and unusual severe morbidity (3). Some complications may eventually occur and becoming more and more frequent due to the high number of patients usually fed through the gastrostomy for months and years (3). Migration of the PEG tube is considered a rare complication of long term enteral feeding. Indeed, standard PEG tubes have external bumpers that prevent migration into the stomach and duodenum. Most of the rare cases of migration into the duodenum were reported with Foley-type tubes that, unlike standard PEG tubes, do not have external bumpers. Nevertheless, Foley tubes are still used because they are cheaper than standard PEG tubes and widely available in nursing homes and other health facilities.

## CASE REPORT

A 73 years old woman was admitted in the emergence room with a two days history of vomiting. She suffered a stroke two years before and she was fed using an endoscopic gastrostomy. Since the discharge after the stroke, the patient was followed in the Artificial Nutrition Outpatient Consultation of our Hospital. Gastrostomy tubes were regularly changed each 4-6 months. One week before the vomiting episode, the patient accidentally pulled out her PEG tube. A Foley catheter was passed in order to replace the PEG tube and the patient was fed through this catheter for a few days. Two days before hospital admission she started vomiting after each meal. At the same time, the Foley catheter was pulled into the stomach leaving just the proximal tip in the PEG gastrocutaneous tract (Fig. 1). An upper GI endoscopy was performed showing the catheter pulled into the duodenum (Fig. 2) where the balloon caused obstruction. The balloon was deflated and removed. A 24Fr PEG tube was passed and the patient resumed gastrostomy feeding immediately without any problem.

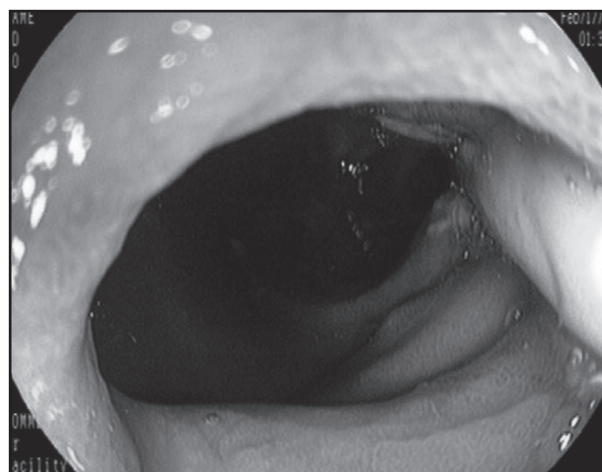
## DISCUSSION

Inadvertent removal of PEG tube occurs in 1.6% to 4.4% of patients (3). In order to maintain the feeding access and prevent



**Figure 1.**

Proximal tip of the Foley catheter in the PEG gastrocutaneous tract.



**Figure 2.**

Foley catheter in the duodenum.

spontaneous closure of the gastrocutaneous tract, the tube must be replaced as soon as possible. A large percentage of PEG fed patients is bedridden or has major motility impairment, living in nursing homes or other institutions. These patients are difficult to move to a hospital where experience enteral feeding teams can provide adequate tube replacement. In many occasions, replacing the PEG tube by a Foley catheter is appealing. Furthermore, some articles support this option. In a 1994 study, 46 patients were randomized for replacement with standard PEG tubes or Foley catheters. They used both tubes during several weeks and neither the Foley catheter nor the standard replacement gastrostomy tube migrated into duodenum (4). To the best of our knowledge, there was no other prospective study evaluating the replacement of PEG tubes with Foley-type catheters but some teams kept advocating this procedure (5). That is not

the experience of our enteral feeding team as over the years we had several cases of tube migration with duodenal obstruction, like the one described above, and others previously reported in literature (6-8). This is not only our experience since over the years a large number of migrations were also reported, including in children (9) and occasionally causing pancreatitis (10). Most of these duodenal migrations are caused by Foley-type catheters (3). Each hospital or institution should have an optimal protocol for PEG tube replacement (11). Replacement of PEG tubes using Foley catheters in institutions without experienced teams and established protocols increases the risks of severe complications.

## CONCLUSION

Replacement of PEG tubes should be performed by experienced teams in institutions with comprehensive protocols and always using standard PEG tubes. According with our experience, the use of Foley-type catheters that may migrate into the duodenum and cause obstruction is occasionally performed in institutions with little experience, nevertheless this strategy is dangerous and should be banned.

## REFERENCES

1. WHO (2002) Active Ageing - A Police Framework. A Contribution of the World Health Organization to the second United Nations World Assembly on Aging. Madrid, Spain, April, 2002.
2. Löser C, Aschl G, Hébuterne X, Mathus-Vliegen EM, Muscaritoli M, Niv Y, et al. ESPEN guidelines on artificial enteral nutrition--percutaneous endoscopic gastrostomy (PEG). *Clin Nutr* 2005;24:848-61.
3. Schrag SP, Sharma R, Jaik NP, Seamon MJ, Lukaszczyk JJ, Martin ND, et al. Complications related to percutaneous endoscopic gastrostomy (PEG) tubes. A comprehensive clinical review. *J Gastrointest Liver Dis* 2007;16:407-18.
4. Kadakia SC, Cassaday M, Shaffer RT. Comparison of Foley catheter as a replacement gastrostomy tube with commercial replacement gastrostomy tube: a prospective randomized trial. *Gastrointest Endosc* 1994;40:188-93.
5. Kelley E, Gokhale CB. Replacing displaced PEG tubes with a Foley catheter. *Gastroenterol Nurs* 1998;21:254-5.
6. Pinto Marques P, Fonseca J. Obstrução duodenal secundária a gastrostomia percutânea. *GE - J Port Gastroenterol* 2006;13:157-8.
7. Nunes A, Santos C, Fonseca J. Gastric outlet obstruction in a patient with percutaneous gastrostomy. *Rev Gastroenterol Mex* 2014;79:56-7.
8. Barosa R, Santos C, Fonseca J. Gastric outlet obstruction: An unusual adverse event of percutaneous endoscopic gastrostomy. *Rev Esp Enferm Dig* 2016;108:53-4.
9. Mollitt DL, Dokler ML, Evans JS, Jeiven SD, George DE. Complications of retained internal bolster after pediatric percutaneous endoscopic gastrostomy. *J Pediatr Surg* 1998;33:271-3.
10. Shah AM, Shah N, DePasquale JR. Replacement gastrostomy tube causing acute pancreatitis: case series with review of literature. *JOP* 2012;1013:54-7.
11. Lohsiriwat V. Percutaneous endoscopic gastrostomy tube replacement: A simple procedure? *World J Gastrointest Endosc* 2013;16:14-8.