



Trabajo Original

Obesidad y síndrome metabólico

Effect of bariatric surgery on neurocognitive function after 6 months of follow-up: a pilot study

Efectos de la cirugía bariátrica sobre la función neurocognitiva después de 6 meses de seguimiento: un estudio piloto

Bruna Lopes Meghelli¹, Anderson Gregorio Joaquim¹, Caroline Bertoncini-Silva¹, Graziela Nogueira de Almeida Ribeiro², Wilson Salgado-Júnior³, Vivian Marques Miguel Suen¹

¹Laboratory of Studies in Nutrition, Neurosciences and Metabolism (LANNEM). Division of Nutrition. Department of Internal Medicine. Ribeirão Preto Medical School. University of São Paulo. Ribeirão Preto, São Paulo. Brazil. ²Psychology Course. Barão de Mauá University Center. Ribeirão Preto, São Paulo. Brazil. ³Department of Surgery and Anatomy. Ribeirão Preto Medical School. University of São Paulo. Ribeirão Preto, São Paulo. Brazil

Abstract

Background: reduced cognitive performance has been observed in patients with severe obesity. Bariatric surgery and subsequent adipose tissue loss seem to affect cognitive functioning positively; however, improvement predictors are not well established.

Aim: to evaluate the cognitive performance and the nutritional status of patients with severe obesity 6-month after bariatric surgery.

Methods: we assessed the neuropsychological performance of 22 patients with obesity (body mass index: ~ 42.9 kg/m²). The nutritional evaluation consisted of the routine tests performed in the baseline and postoperative periods. Lastly, we calculated the correlation between neuropsychological assessment results and blood biomarkers.

Results: the patients did not present cognitive impairment in the preoperative assessment, but performed below the standard range. The patients underwent significant weight loss after 6 months from surgery (~ 22 kg), with a change in obesity class III to I. Also, the patients presented a significant improvement in attention, mental flexibility, inhibitory control, and processing speed. Additionally, we observed a significant improvement in serum folic acid (108 %), gamma-glutamyl transferase (-41 %), uric acid (-32 %), ferritin (-28 %), triglycerides (-19 %), and high-density lipoprotein (9 %). Lastly, we found a moderate positive correlation between processing speed and body weight ($r = 0.46$), gamma-glutamyl transferase ($r = 0.54$), and total protein and mental flexibility ($r = 0.75$).

Conclusion: bariatric surgery promoted significant weight loss and improved attention, mental flexibility, processing speed, and several nutritional biomarkers. Nevertheless, the surgery had limited effects on other cognitive functions such as short- and long-term memory and language.

Keywords:

Obesity. Bariatric surgery. Neuropsychological tests. Nutritional status.

Received: 02/07/2021 • Accepted: 26/07/2021

Funding: this study was funded by Coordenação de Aperfeiçoamento de Pessoal de Nível Superior (CAPES) - Brazil [grant number: 88882.180026/2018-01].

Conflicts of interest: the authors declare that they have no conflicts of interest in compliance with CFM Resolution No. 1595/2000.

Acknowledgments: we would like to show our gratitude to the staff of the Bariatric Surgery Clinic for assisting with this research.

Ethical approval: the Ethics Committee of the institution approved all procedures performed in the present study (process number 8763/2009). Additionally, all procedures performed in studies involving human participants are in accordance with the ethical standards of the institutional and/or national research committee, and with the 1964 Helsinki Declaration and its later amendments, or comparable ethical standards.

Meghelli BL, Joaquim AG, Bertoncini-Silva C, Ribeiro GNA, Salgado-Júnior W, Suen VMM. Effect of bariatric surgery on neurocognitive function after 6 months of follow-up: a pilot study. *Nutr Hosp* 2022;39(2):305-312

DOI: <http://dx.doi.org/10.20960/nh.03761>

Correspondence:

Caroline Bertoncini Silva. Faculdade de Medicina de Ribeirão Preto. Universidade de São Paulo. Avenida Bandeirantes, 3900. Monte Alegre. 14049-900. Ribeirão Preto, São Paulo. Brazil
e-mail: bertoncinicaroline@gmail.com

Resumen

Introducción: se ha observado una disminución del rendimiento cognitivo en los pacientes con obesidad grave. La cirugía bariátrica y la pérdida de tejido adiposo parecen mejorar el funcionamiento cognitivo; sin embargo, los predictores de mejora no están bien establecidos.

Objetivos: evaluar el rendimiento cognitivo y el estado nutricional de pacientes con obesidad severa después de 6 meses de una cirugía bariátrica.

Métodos: evaluamos el desempeño neuropsicológico de 22 pacientes con un índice de masa corporal $\sim 42,9$ kg/m². Se analizaron las pruebas de rutina realizadas al inicio y después de la cirugía. Calculamos la correlación con la evaluación neuropsicológica y los biomarcadores sanguíneos.

Resultados: los pacientes no mostraron deterioro cognitivo en la evaluación preoperatoria, pero sí un rendimiento por debajo del estándar. Los pacientes mostraron una pérdida de peso significativa 6 meses después de la cirugía (~ 22 kg), con un cambio de la clasificación de obesidad de III a I. Además, los pacientes mostraron una mejora significativa de la atención, la flexibilidad mental, el control inhibitorio y la velocidad de procesamiento. Además, observamos una mejora significativa del ácido fólico sérico (108 %), la gamma-glutamyl-transferasa (-41 %), el ácido úrico (-32 %), la ferritina (-28 %), los triglicéridos (-19 %) y las lipoproteínas de alta densidad (9 %). Finalmente, encontramos una correlación positiva moderada entre la velocidad de procesamiento y el peso corporal ($r = 0,46$) y la gamma-glutamyl-transferasa ($r = 0,54$), y entre la proteína total y la flexibilidad mental ($r = 0,75$).

Conclusiones: la cirugía bariátrica promovió una pérdida de peso significativa y mejoró la atención, la flexibilidad mental, la velocidad de procesamiento y varios biomarcadores nutricionales. Sin embargo, tuvo efectos limitados sobre otras funciones cognitivas, como la memoria y el lenguaje a corto y largo plazo.

Palabras clave:

Obesidad. Cirugía bariátrica. Pruebas neuropsicológicas. Estados nutricionales.

INTRODUCTION

Obesity has reached epidemic proportions representing a public health problem worldwide, with approximately 38 % of the adult world population estimated to be overweight by 2030, and severe obesity (when body mass index or BMI ≥ 40 kg/m²) is associated with chronic diseases and comorbidities (1). In obesity, elevated inflammatory markers such as C-reactive protein (CRP) (2), gamma-glutamyl transferase (GGT), and alanine aminotransferase (ALT) (3), are observed together with nonalcoholic fatty liver disease (NAFLD) (4). Additionally, adiposity reportedly affects the brain and reduces cognitive abilities (5), being associated with a higher risk of developing neurological disorders such as cerebral gray matter atrophy and Alzheimer's disease (6). Obese persons also score lower in cognitive testing and tasks of attention, memory, and executive function (7).

Bariatric surgery is an effective and increasingly popular method for weight loss among severely obese people. However, up to one third of patients either fail to lose weight or experience significant weight gains at follow-up (8). Nevertheless, bariatric surgery is associated with cognitive improvement – particularly memory and psychological health – 12 weeks and 24 months after surgery (9). However, cognitive impairment may also contribute to suboptimal weight loss after bariatric surgery. Patients with obesity frequently display deficient attention, executive functioning skills, and memory when compared to eutrophic individuals (10). Additionally, higher BMI is associated with worst performances on response inhibition, working memory, planning, and cognitive flexibility (10).

The long-term effects of bariatric surgery on cognitive function remain poorly understood. Additionally, until this moment we did not observe previous studies that have investigated the association between blood biomarker changes, neuropsychological deficit, and postoperative nutritional status. We hypothesized that, after bariatric surgery, patients with obesity would exhibit enhanced cognitive function, which could be dependent on biomarker improvements. Thus, the present study aimed to

assess the neuropsychological function of patients with severe obesity 6 months after bariatric surgery. Moreover, we analyzed if neuropsychological function improvement was associated with changes in the patients' nutritional profiles.

MATERIALS AND METHODS

STUDY DESIGN AND PARTICIPANTS

This was a longitudinal prospective study. The sample comprised 22 patients with severe obesity (BMI ≥ 40 kg/m²) aged 18 years or older, recruited according to the number of patients treated at the Bariatric Surgery Clinic. The chosen sample included patients who had data available for all the variables investigated at preoperative baseline and 6 months after surgery. All participants underwent a Roux-en-Y gastric bypass (RYGB) (11), and all surgeries were performed by the same surgeons without postoperative complications. Inclusion criteria were BMI ≥ 40 kg/m² and 18 years of age or older. Exclusion criteria were smoking, excessive alcohol consumption, pregnancy, malignant neoplasms, unresolved psychiatric illnesses, neurological damage, having no formal education, and impossibility to follow-up. All participants signed informed consent forms, and all procedures were approved by the Ethics Committee (process number 8763/2009) and started only after obtaining an informed consent.

ANTHROPOMETRICS AND BIOCHEMICAL MEASUREMENTS

Anthropometric data were analyzed at baseline and 6 months after surgery. The variables weight (kg), height (m), BMI (kg/m²), change in BMI (kg/m²), and total weight loss (%TWL; kg and %) were obtained through standardized protocols. Blood and urine samples were collected from all subjects, at baseline and at 6 months after surgery, for chemistry and hematology testing.

NEUROPSYCHOLOGICAL TESTS

Neuropsychological tests were applied to all volunteers at baseline and 6 months after surgery by the same investigator. The battery of tests demonstrated a high sensitivity to the altered cognitive performance of obese individuals (10) and bariatric surgery patients (12). The tests also assessed performance in multiple cognitive domains and were completed in approximately 60 minutes. The specific tests comprised the following we expose.

Semi-structured interview and mental state

The 30-item Mini-Mental State Examination (MMSE) screening test assessed temporal and spatial orientation, registration, memory, attention, calculation, language, recall, and constructive skills (13).

Beck's Anxiety Inventory (BAI)

Assessed the presence and severity of anxiety. The items described the emotional, physiological, and cognitive symptoms of anxiety, but not of depression (14).

Stroop Color and Word Test (SCWT)

This tool assessed mental flexibility, selective visual attention, and inhibitory control. The subjects performed color (SCWT 1) and color-word trials (SCWT 2); with the scores from the two trials, the number of correct responses to each set were obtained (SCWT 3) (15).

Concentrated Attention Test (TEACO-FF)

The scores were obtained by the result of the stimuli that the person should mark and actually scored, subtracted from errors (stimuli that should not be marked and were) and omissions, that is, the target stimuli that were not marked by the person (16).

Rey-Osterrieth Complex Figure (ROCF)

It is a qualitative test that assesses the skills of visuospatial organization, planning, and strategy development skills, as well as visuospatial, immediate (short-term), and late (long-term) memory. This analysis included copy accuracy and delayed recall accuracy (17).

Rey Auditory-Verbal Learning Test (RAVLT)

This instrument measured episodic declarative memory, immediate memory, new verbal learning, retention of information, and memory recognition (18).

Wechsler Adult Intelligence Scale-Third Revision (WAIS-III)

This scale assessed verbal understanding, perceptual organization, working memory, and processing speed. It provided the executive intelligence quotient (EIQ) and processing speed index (PSI) (19).

STATISTICAL ANALYSIS

All the data were described as median, minimum, maximum, or interquartile range. All neuropsychological, anthropometric, and biochemical analyses were performed through the Wilcoxon rank-sum non-parametric test for paired samples. Spearman's rank correlation coefficient test was used to assess the relationship between neuropsychological tests and biochemical data that reached statistically significant differences. For this analysis, the difference between post-test and baseline was obtained. The margin of error used in the statistical tests was 5 %.

RESULTS

Table I describes the demographic and medical characteristics of subjects.

Table I. Baseline data in the screening of demographic and medical characteristics (n = 22)

Age (yrs) median [minimum; maximum]	42.5 [24; 61]
Gender, male/female (n)	2/20
Married/single (n)	15/7
Psychological support (n)	5
Use of psychiatric medication (n)	5
Obesity in the family (n)	19
<i>Start of weight gain</i>	
After pregnancy (n)	13
During childhood/puberty (n)	9
<i>Grade education</i>	
Incomplete basic school (n)	4
Complete basic school (n)	7
Complete high school (n)	9
Complete higher education (n)	2
<i>Comorbidities</i>	
Hypertension (n)	15
Orthopedic problems (n)	7
<i>Others</i>	
Alcohol consumption (n)	5
Employed (n)*	19
Difficulties at work (n)†	20

*Maid job, kitchen porter, receptionist, teacher, truck driver, retired employee, dentistry assistant and manicure. †Due to pain, tiredness, and/or discrimination.

Consistent with clinical interpretation, anxiety symptoms were absent during the assessment period (raw score of ~ 1 on BAI). The MMSE screening verified that no patients presented incapacitating neurocognitive disorders (median z-score = -0.15).

Six months after the surgery, TWL and BMI decreased significantly (by approximately 22 % and 21 %, respectively). Additionally, the mean BMI values of the participants fell within moderate obesity (BMI = obese class I). Approximately, 31 % of participants exhibited a TWL greater than 25 %; only one participant presented a TWL of less than 10 % (Table II).

In most of the neuropsychological tests, the patients performed within the low-average range considered standard for their age, and no participant presented cognitive domain impairments. Attention, mental flexibility, and inhibitory control improved significantly (by approximately 12 %) on the SCWT 2. The other attention domains presented no statistical differences (Fig. 1).

Visuospatial organization, planning, visual, short- and long-term memory, and language presented no statistical differences at the 6-month postoperative assessment (Fig. 2A and 2B).

Table II. Anthropometric data of obese patients before RYGB and 6 months after RYGB (n = 22)

Measure	Median [minimum; maximum]	
	Baseline	6 months after RYGB
Body weight (kg)	111.7 [84; 155]	84 [69.7; 129]*
BMI (kg/m ²)	42.9 [34.7; 53]	33.7 [26.1; 44.2]*
Change BMI (kg/m ²)		-9.1 [-14.6; -3]
TWL (kg)		-21.9 [-40; -7]
TWL (%)		-19.6 [-34.4; -8.3]

BMI: body mass index; RYGB: Roux-en-Y gastric bypass; %TWL: total weight loss. *Different from baseline for the Wilcoxon Rank-Sum Test ($p < 0.05$).

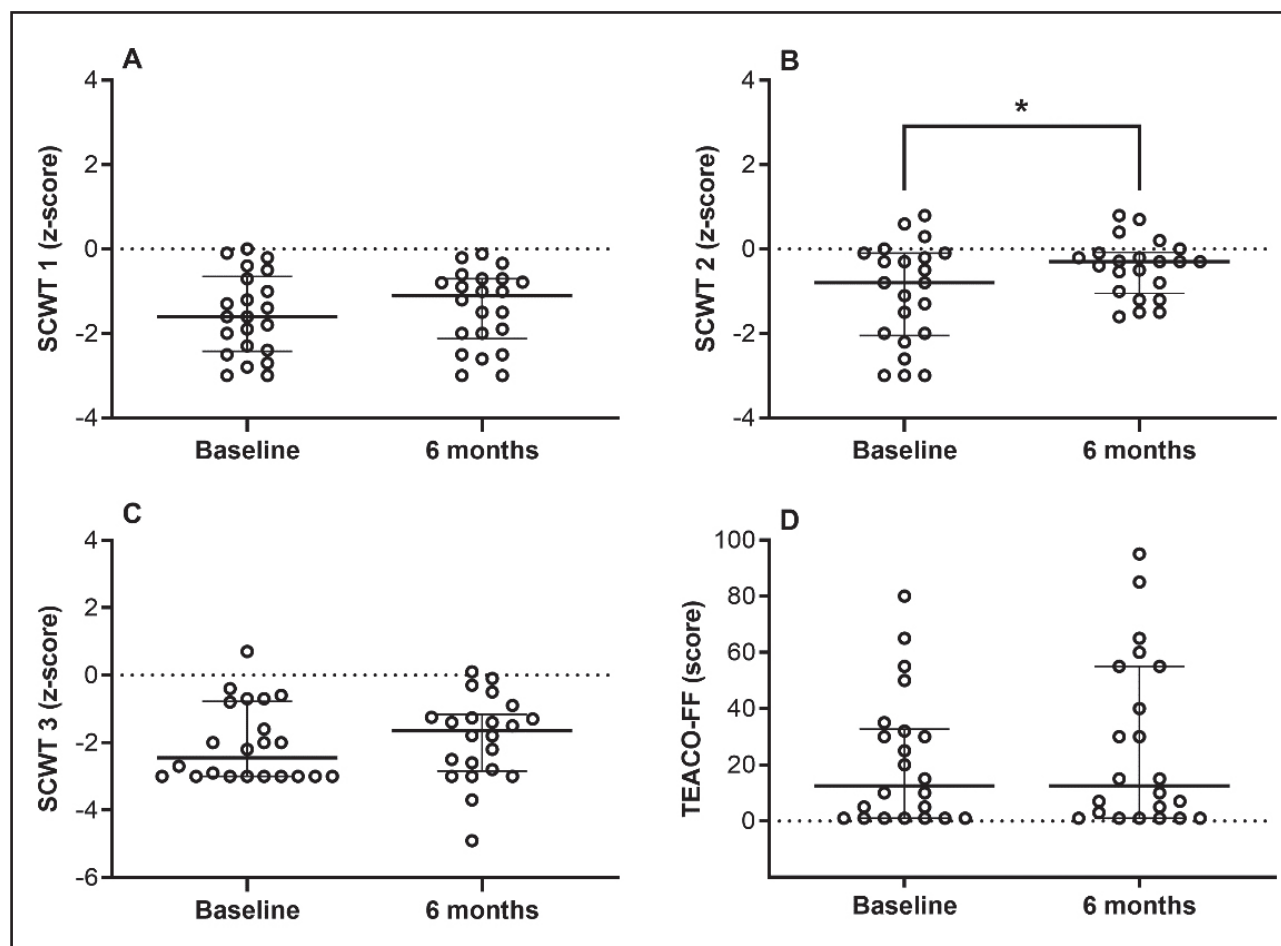


Figure 1.

Attention, mental flexibility, and inhibitory control (SCWT: Stroop color and word test (panels A, B and C); TEACO-FF: concentrated attention test (panel D)). *Different from baseline for the Wilcoxon Rank-Sum Test ($p < 0.05$). Data are median and interquartile range, n = 22.

Similar results were obtained for episodic memory, verbal learning, retention of information, memory recognition, and executive functions (Fig. 2C, 2D, and 2E). However, the PSI presented a lower variability and increased significantly by approximately 12 % at the 6-month postoperative cutoff (Fig. 2F).

The biomarkers decreased significantly (~ 41 % in GGT, 28 % in ferritin, 32 % in uric acid, 19 % in triglycerides, and 5.5 % in

total protein). Moreover, we found a significant increase of folic acid (~ 108 %), high-density lipoprotein (HDL; ~ 9 %), and mean corpuscular volume (4 %) (Table III).

A moderate positive correlation was observed between SCWT 2 and total protein ($r = 0.75$), and between PSI and body weight ($r = 0.46$) and GGT ($r = 0.54$, respectively) (Table IV).

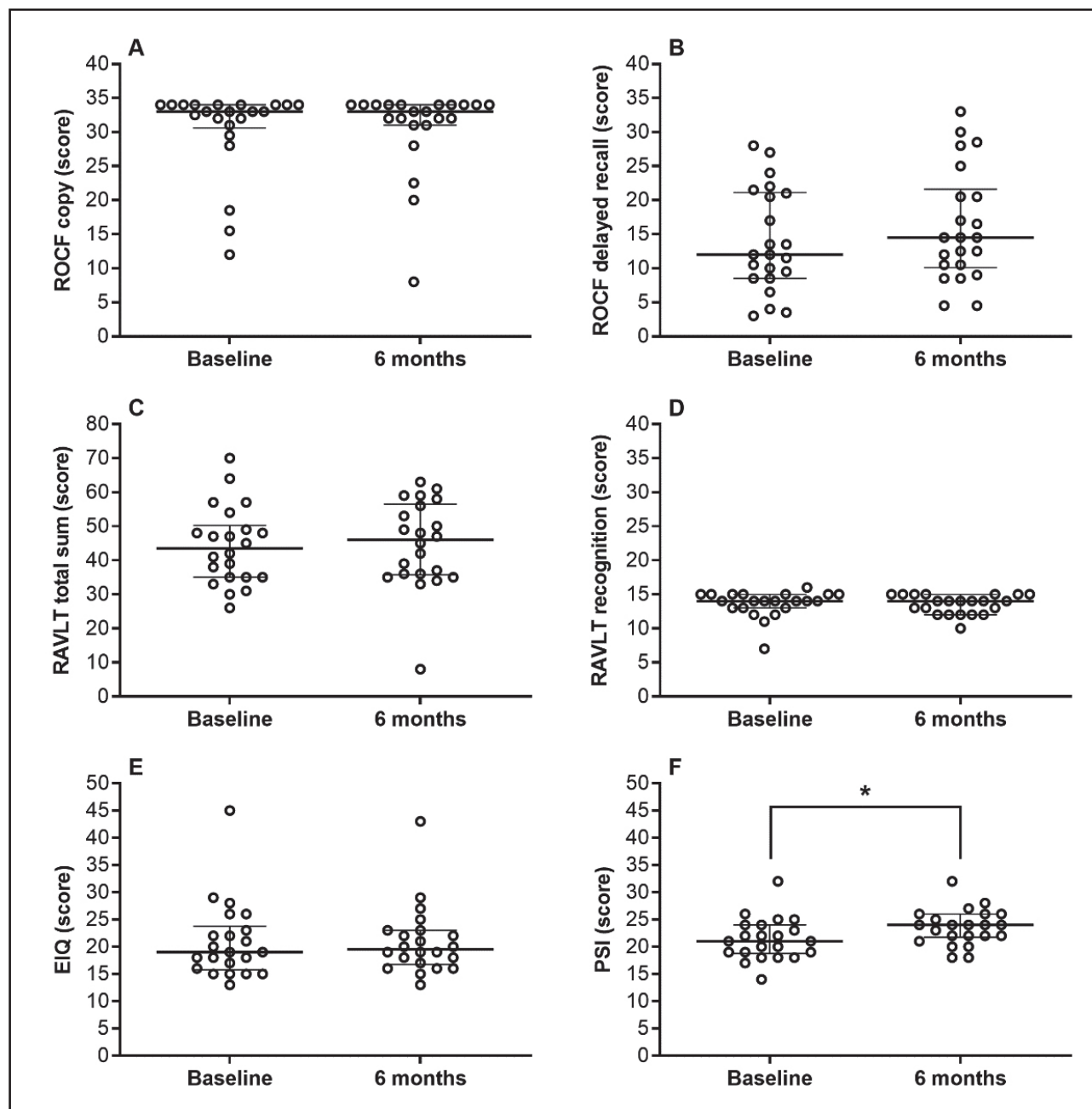


Figure 2.

Visuospatial organization, planning, visual, short-term, long-term and episodic memory, verbal learning, retention of information, memory recognition. ROCF:: Rey-Osterrieth complex figure (panels A and B); RAVLT: Rey auditory-verbal learning test (panels C and D); EIQ: execution intelligence quotient (panel E); PSI: processing speed index (panel F). *Different from baseline for the Wilcoxon Rank-Sum test ($p < 0.05$). Data are median and interquartile range, $n = 22$.

Table III. Biochemical and hematological data of obese patients before RYGB and 6 months after RYGB (n = 22)

Measure	Median [minimum; maximum]	
	Baseline	6 months after RYGB
Glucose (mg/dL)	92 [74; 105]	83.6 [70.4; 110.7]
TC (mg/dL)	192 [112; 236]	168 [139; 224]
TG (mg/dL)	109 [38; 205]	77.1 [44; 145]*
HDL (mg/dL)	48 [32.7; 99]	52 [33; 89.6]*
LDL (mg/dL)	117 [53; 175]	103 [72; 140]
Folic acid (ng/mL)	6.7 [4.2; 24]	21.3 [4.3; 24]*
Iron (µg/dL)	76 [37; 119]	78.4 [26; 106.9]
Ferritin (µg/L)	157.5 [14.9; 363]	112.5 [4; 259]*
LIBC (µg/dL)	232 [85; 374]	231.7 [124; 379]
Hemoglobin (g/dL)	13.4 [11.4; 15.7]	13 [11.3; 15]
Hematocrit (%)	39 [34; 47]	40 [35; 45]
MCV (fL)	88 [78; 94]	90 [74; 100]*
Vitamin A (mg/L)	0.42 [0.22; 0.59]	0.42 [0.27; 0.62]
Vitamin B ₁₂ (ng/L)	356.5 [151; 1000]	381 [150; 657]
Vitamin E (mg/L)	5.6 [3.8; 8.4]	5.7 [3.8; 9]
ALT (U/L)	24.7 [11.6; 59]	21.4 [10.8; 43.7]
GGT (U/L)	29 [14; 298]	20.3 [6.7; 112]*
Urea (mg/dL)	26 [10; 49]	25 [18.8; 41.2]
Uric acid (mg/dL)	5.1 [3.5; 7.1]	3.3 [2.1; 5.9]*
Creatinine (mg/dL)	0.8 [0.6; 1]	0.7 [0.6; 0.9]
Total protein (g/dL)	7 [6.6; 9.8]	6.5 [5.9; 7.4]*
Albumin (g/dL)	4.2 [3.7; 4.7]	4.1 [3.6; 4.5]

ALT: alanine aminotransferase; GGT: gamma-glutamyl transferase; HDL: high-density lipoprotein; LDL: low-density lipoprotein; LIBC: latent iron-binding capacity; MCV: mean corpuscular volume; RYGB: Roux-en-Y gastric bypass; TC: total cholesterol; TG: triglycerides. *Different from baseline for the Wilcoxon Rank-Sum Test ($p < 0.05$).

DISCUSSION

According to the applied neuropsychological tests, the participants of this study did not present cognitive impairments but performed poorly within the standard range in the preoperative assessments. The weight loss achieved in the 6-month postoperative period was accompanied by a slight increase in attention, mental flexibility, inhibitory control, and processing speed. Addi-

Table IV. Correlations of biomarker changes with neuropsychological test changes achieving significant statistical differences at 6 months after RYGB

	Correlation coefficient (p-value)	
	SCWT 2	PSI
Body weight, kg	-0.27 (0.905)	0.46 (0.033)*
TG, mg/dL	0.26 (0.348)	-0.15 (0.583)
HDL, mg/dL	0.24 (0.394)	0.08 (0.765)
Folic acid, ng/mL	0.10 (0.777)	-0.16 (0.663)
Ferritin, ng/mL	-0.42 (0.106)	0.09 (0.740)
MCV, fL	-0.15 (0.556)	-0.1 (0.700)
GGT, U/L	0.06 (0.823)	0.54 (0.045)*
Uric acid, mg/dL	0.72 (0.071)	-0.25 (0.589)
Total protein, g/dL	0.75 (0.033)*	0.02 (0.965)

GGT: gamma-glutamyl transferase; HDL: high-density lipoprotein; MCV: mean corpuscular volume; PSI: processing speed index; RYGB: Roux-en-Y gastric bypass; SCWT: Stroop color and word test; TG: triglycerides. *Different for Spearman's correlation test ($p < 0.05$).

tionally, we observed a significant positive correlation between SCWT 2 and total protein, and between PSI and body weight, and PSI and GGT.

Unlike previous studies, our results did not indicate a cognitive deficit in bariatric surgery candidates (20). Regardless, the significant improvement in SCWT 2 in our study is in accordance with the improvements in attention switching 12 weeks after surgery (12). A previous study showed that the enhanced attention and mental flexibility persist for up to 24 months after bariatric surgery (9,21). The cognition prejudice in obesity is attributed to lower metabolic activity and a smaller gray matter volume in the prefrontal cortex, hypothalamus, and cingulate gyrus (22). Although the data are inconsistent, inflammatory cytokines released from visceral fat such as interleukin 6, tumor necrosis factor-alpha, and CRP lead to changes in both gray and white matter volumes (22).

It has also been shown that long-term obesity may lead to hippocampal damage, microvascular remodeling, and reduced frontal lobe volume, and interferes in brain maturation during adolescence (23). Our results did not show changes in short- or long-term, episodic, work, or visuospatial memory. Although our sample included nine patients who developed obesity in childhood or adolescence, it is possible that we did not observe cognitive deficiencies due to our insufficient sample size.

Improvement in processing speed was moderately associated with body weight and GGT. Although the mechanisms involved are not fully understood, GGT is a strong independent predictor of obesity (odds ratio of 4.8) (24). Similarly, the specific mechanism

involving processing speed and GGT has not been described; however, GGT has recently been associated with cognitive decline risk in middle-aged and elderly persons (25). GGT was also proposed to trigger pro-oxidant and pro-inflammatory properties, which might affect the vascular structure (26).

Our GGT and ALT results were similar to those of a previous study regarding patients with obesity submitted to RYGB (27). Additionally, lower GGT levels may indicate reduced NAFLD inflammation (3). Although the mechanisms involved in NAFLD improvement after bariatric surgery are not fully understood, reduction in insulin resistance and dyslipidemia may contribute to it (27).

Uric acid (UA) reduction is consistent with other study that reported UA decrease in patients with obesity who underwent RYGB (28). The decrease in UA is proportional to the degree of weight loss (assessed by change in BMI). This relationship may be due to reduced urate production and increased renal urate clearance following weight loss (29). Further research is needed to clarify the origin and relationship between UA and adiposity. We also found a significant increase in HDL at the 6-month follow-up visit, and it is suggested that after RYGB, the subsequent hepatic expression of the paraoxonase-1 gene contributes to antioxidant and antiatherogenic HDL activity (30).

Our study's primary limitation was its small sample size, which restricted our understanding of the impact of postoperative weight loss on cognitive function. A secondary limitation was the lack of a control group, given we recruited the patients by convenience without randomization, which diminished the study's power. Thus, we were unable to determine causality for the observed cognitive changes induced by weight loss.

Additionally, a third limitation was the significant variability in our sample. The hospital environment, the researcher-participant relationships, and the patients' emotional aspects may have negatively influenced the collection of cognitive function data. In our study, the leading investigator was a psychologist who observed qualitative changes in the patients' affective, marital, familiar, and self-image domains. A fourth limitation we did not anticipate was modifiable risk factors such as low serum iron, folic acid, and vitamins. Thus, we are unsure whether nutrient supplementation prior to bariatric surgery could affect neurocognitive function. Lastly, the 6-month follow-up limited the substantiation of greater cognitive function improvements, such as those found in studies with 24 or 36 months after surgery (9,21).

To our knowledge, our study was the first one to analyze the association between cognitive function and nutritional biomarkers. However, we were unable to validate if an improvement in nutritional profile directly affects cognitive function. Further clinical studies, with a larger sample size, are necessary to understand the influences of nutritional status and massive weight loss over the cognitive function of bariatric patients. Additionally, bariatric patient difficulties must be considered when adapting the multidisciplinary approach, positively changing sedentary behavior and eating patterns.

As a practical application of the present results, this study could help guide the psychologist during follow-up of a bariatric

patient. It is worth paying attention to the results of the cognitive analysis, as changes in it could signal nutritional deficiencies and, therefore, the patient should be referred for nutritional care, which reinforces the importance of a multidisciplinary team in the care of these patients.

In conclusion, after bariatric surgery the patients presented a slight improvement in attention, mental flexibility, speed processing, and several nutritional biomarkers. Nevertheless, bariatric surgery marginally impacted other cognitive domains, such as short- and long-term memory and language.

REFERENCES

1. Afshin A, Forouzanfar MH, Reitsma MB, Sur P, Estep K, Lee A, et al. Health effects of overweight and obesity in 195 countries over 25 years. *N Engl J Med* 2017;377(1):13-27. DOI: 10.1056/NEJMoa1614362
2. Lemieux I, Pascot A, Prud'homme D, Alméras N, Bogaty P, Nadeau A, et al. Elevated C-reactive protein: Another component of the atherothrombotic profile of abdominal obesity. *Arterioscler Thromb Vasc Biol* 2001;21(6):961-7. DOI: 10.1161/01.atv.21.6.961
3. Dixon JB, Bhathal PS, O'Brien PE. Weight loss and non-alcoholic fatty liver disease: Falls in gamma-glutamyl transferase concentrations are associated with histologic improvement. *Obes Surg* 2006;16(10):1278-86. DOI: 10.1381/096089206778663805
4. Yki-Järvinen H. Non-alcoholic fatty liver disease as a cause and a consequence of metabolic syndrome. *Diabetes Endocrinol* 2014;2(11):901-10. DOI: 10.1016/S2213-8587(14)70032-4
5. Rizvi AA. Hypertension, obesity, and inflammation: The complex designs of a deadly trio. *Metab Syndr Relat Disord* 2010;8(4):287-94. DOI: 10.1089/met.2009.0116
6. Gunstad J, Paul RH, Cohen RA, Tate DF, Spitznagel MB, Grieve S, et al. Relationship between body mass index and brain volume in healthy adults. *Int J Neurosci* 2008;118(11):1582-93. DOI: 10.1080/00207450701392282
7. Gunstad J, Lhotsky A, Wendell CR, Ferrucci L, Zonderman AB. Longitudinal examination of obesity and cognitive function: Results from the Baltimore longitudinal study of aging. *Neuroepidemiology* 2010;34(4):222-9. DOI: 10.1159/000297742
8. Karlsson J, Taft C, Rydén A, Sjöström L, Sullivan M. Ten-year trends in health-related quality of life after surgical and conventional treatment for severe obesity: The SOS intervention study. *Int J Obes* 2007;31(8):1248-61. DOI: 10.1038/sj.ijo.0803573
9. Alosco ML, Spitznagel MB, Strain G, Devlin M, Cohen R, Paul R, et al. Improved memory function two years after bariatric surgery. *Obesity (Silver Spring)* 2014;22(1):32-8. DOI: 10.1002/oby.20494
10. Gunstad J, Paul RH, Cohen RA, Tate DF, Gordon E. Obesity is associated with memory deficits in young and middle-aged adults. *Eat Weight Disord* 2006;11(1):e15-9. DOI: 10.1007/BF03327747
11. Pinhel MA de S, Noronha NY, Nicoletti CF, de Oliveira BAP, Cortes-Oliveira C, Pinhanelli VC, et al. Changes in global transcriptional profiling of women following obesity surgery bypass. *Obes Surg* 2018;28:176-86. DOI: 10.1007/s11695-017-2828-x
12. Gunstad J, Strain G, Devlin MJ, Wing R, Cohen RA, Paul RH, et al. Improved memory function 12 weeks after bariatric surgery. *Surg Obes Relat Dis* 2011;7(4):465-72. DOI: 10.1016/j.soard.2010.09.015
13. Folstein MF, Folstein SE, McHugh PR. "Mini-mental state". A practical method for grading the cognitive state of patients for the clinician. *J Psychiatr Res* 1975;12(3):189-98. DOI: 10.1016/0022-3956(75)90026-6
14. Chapman LK, Williams SR, Mast BT, Woodruff-Borden J. A confirmatory factor analysis of the Beck Anxiety Inventory in African American and European American young adults. *J Anxiety Disord* 2009;23(3):387-92. DOI: 10.1016/j.janxdis.2008.12.003
15. Rivera D, Perrin PB, Stevens LF, Garza MT, Weil C, Saracho CP, et al. Stroop Color-Word Interference Test: Normative data for the Latin American Spanish speaking adult population. *NeuroRehabilitation* 2015;37(4):591-624. DOI: 10.3233/NRE-151281
16. Cecilio-Fernandes D, Marín Rueda FJ. Evidência de validade concorrente para o Teste de Atenção Concentrada (TEACO-FF). *Psic* 2007;8:167-74.

17. Deckersbach T, Savage CR, Henin A, Mataix-Cols D, Otto MW, Wilhelm S, et al. Reliability and validity of a scoring system for measuring organizational approach in the complex figure test. *J Clin Exp Neuropsychol* 2000;22(5):640-8. DOI: 10.1076/1380-3395(200010)22:5;1-9;FT640
18. Magalhães SS, Hamdan AC. The rey auditory verbal learning test: Normative data for the brazilian population and analysis of the influence of demographic variables. *Psychol Neurosci* 2010;3(1):85-91. DOI: 10.3922/j.psns.2010.1.011
19. Jasinski LJ, Berry DTR, Shandera AL, Clark JA. Use of the Wechsler Adult Intelligence Scale Digit Span subtest for malingering detection: A meta-analytic review. *J Clin Exp Neuropsychol* 2011;33(3):300-14. DOI: 10.1080/13803395.2010.516743
20. Sargénius HL, Lydersen S, Hestad K. Neuropsychological function in individuals with morbid obesity: A cross-sectional study. *BMC Obes* 2017;4:6. DOI: 10.1186/s40608-017-0143-7
21. Alosco ML, Galioto R, Spitznagel MB, Strain G, Devlin M, Cohen R, et al. Cognitive function after bariatric surgery: evidence for improvement 3 years after surgery. *Am J Surg* 2014;207:870-6. DOI: 10.1016/j.amjsurg.2013.05.018
22. Debette S, Beiser A, Hoffmann U, Decarli C, O'Donnell CJ, Massaro JM, et al. Visceral fat is associated with lower brain volume in healthy middle-aged adults. *Ann Neurol* 2010;68(2):136-44. DOI: 10.1002/ana.22062
23. Spitznagel MB, Alosco M, Inge TH, Rochette A, Strain G, Devlin M, et al. Adolescent weight history and adult cognition: before and after bariatric surgery. *Surg Obes Relat Dis* 2016;12(5):1057-64. DOI: 10.1016/j.soard.2016.01.023
24. Elshorbagy AK, Refsum H, Smith AD, Graham IM. The association of plasma cysteine and gamma-glutamyltransferase with BMI and obesity. *Obesity (Silver Spring)* 2009;17(7):1435-40. DOI: 10.1038/oby.2008.671
25. Kunutsor SK, Laukkanen JA. Gamma glutamyltransferase and risk of future dementia in middle-aged to older Finnish men: A new prospective cohort study. *Alzheimer's Dement* 2016;12(9):931-41. DOI: 10.1016/j.jalz.2016.03.003
26. Emdin M, Pompella A, Paolicchi A. Gamma-glutamyltransferase, atherosclerosis, and cardiovascular disease: triggering oxidative stress within the plaque. *Circulation* 2005;112(14):2078-80. DOI: 10.1161/CIRCULATIONAHA.105.571919
27. Franzini M, Musetti V, Guarino D, Caponi L, Paolicchi A, Emdin M, et al. γ -Glutamyltransferase fractions in obese subjects with type 2 diabetes: relation to insulin sensitivity and effects of bariatric surgery. *Obes Surg* 2018;28(5):1363-71. DOI: 10.1007/s11695-017-3017-7
28. Liu W, Zhang H, Han X, Zhang P, Mao Z. Uric acid level changes after bariatric surgery in obese subjects with type 2 diabetes mellitus. *Ann Transl Med* 2019;7(14):332. DOI: 10.21037/atm.2019.06.66
29. Antozzi P, Soto F, Arias F, Carrodegua L, Ropos T, Zundel N, et al. Development of acute gouty attack in the morbidly obese population after bariatric surgery. *Obes Surg* 2005;15(3):405-7. DOI: 10.1381/0960892053576802
30. Julve J, Pardiña E, Pérez-Cuellar M, Ferrer R, Rossell J, Baena-Fustegueras JA, et al. Bariatric surgery in morbidly obese patients improves the atherogenic qualitative properties of the plasma lipoproteins. *Atherosclerosis* 2014;234(1):200-5. DOI: 10.1016/j.atherosclerosis.2014.02.034